



*Church of England Church and graveyard
Holtermann Collection, Mitchell Library, State Library of NSW*

THE CEMETERIES OF THE TAMBAROORA

*A look at the Early Cemeteries of the Tambaroora, nine that are known
not all used but the intention was there*

More Questions than Answers

*Warwick P Taylor
tambaroora.com*

© 2026

PREFACE

The information in the following pages is not so much a story of the cemeteries but more akin to all the research data I have managed to compile relating to each of the cemeteries.

There are nine known cemeteries which have been referenced in the Tambaroora area in the past, some were used for interments and others although surveyed and gazetted were never used. Each has an interesting story to tell and hopefully the following pages will shed light on either their existence or where they were to be located.

Until recently only three cemeteries were known to exist, the Catholic cemetery, the Chinese cemetery and the General cemetery formerly the Church of England graveyard, all situated within the precincts of Tambaroora township.

The following are the known Cemeteries:

- 1. 1852 - an early burial ground which was mentioned in 1852 in correspondence addressed to the Colonial Secretary which noted that it had 10 interments. Its location is currently under investigation. The town survey map of Tambaroora in 1859 indicated a cemetery on the northeastern side of the Town of unknown denomination.*
- 2. 1855 – Bald Hill Cemetery - a small cemetery has been shown on early maps of Bald Hills on the western side of Hill End Creek formerly known as Bald Hills Creek, this cemetery appears to have been located next to the Bullen Bullen bridle track later known as Warrys Road. A re-alignment of this road later saw it possibly situated over the cemetery.*
- 3. Pre 1859 Catholic cemetery, came into existence in Burial Ground gully later known as Moonlight Gully/Creek.*
- 4. 1856 - Chinese cemetery - was established in Burying Ground gully later known as Moonlight Gully/Creek.*
- 5. 1854 - Church of England Graveyard - although never intended to be a cemetery the current general cemetery at Tambaroora is the early Church of England graveyard.*
- 6. 1873 – Hill End Cemetery - a general cemetery was surveyed, gazetted and dedicated in 1873 on the eastern side of the village of Hill End to be known as the Hill End General Cemetery but it was never used and its status was revoked in 1893.*
- 7. 1859 - Tambaroora General Cemetery - a survey in 1859 and again in 1863 saw the establishment of a cemetery southeast from the Town of Tambaroora on the road to Sofala/Bathurst, of mixed denomination. Now private property known as History Hill.*
- 8. 1897 - Tambaroora General Cemetery - yet another general cemetery was surveyed, gazetted and dedicated, this time approximately 1.5 kms west of the Town of Tambaroora, of mixed denomination.*
- 9. 1951 - Tambaroora General Cemetery - the current general cemetery, formerly the Church of England graveyard (5).*

See the cemeteries' location map on the next page.

Each of these cemeteries is explained in more detail in the following pages.

Cemetery Locations

- 1. Pioneer Cemetery*
- 2. Bald Hills Cemetery*
- 3. Catholic Cemetery*
- 4. Chinese Cemetery*
- 5. Church of England Graveyard*
- 6. Hill End Cemetery*
- 7. Tambaroora General Cemetery 1859*
- 8. Tambaroora General Cemetery 1898*
- 9. Tambaroora General Cemetery 1951*

CEMETERIES OF THE TAMBAROORA

Saturday, 11 April 2026

© Warwick P Taylor 2026 - tambaroora.com



CEMETERIES OF THE TAMBAROORA

Saturday, 11 April 2026

© Warwick P Taylor 2026 – tambaroora.com

Contents

UPDATES	5
Acknowledgement of the Wiradjuri Nation	6
Acknowledgements	7
Interpretation and definition of words, phrases and locations	8
PIONEER CEMETERY - 1852	9
BALD HILLS CEMETERY - Circa 1850's	17
CATHOLIC CEMETERY - Tambaroora	21
CHINESE CEMETERY	26
CHURCH OF ENGLAND GRAVEYARD - 1854 (see TAMBAROORA GENERAL CEMETERY - 1951).....	30
HILL END CEMETERY - 1874.....	31
TAMBAROORA GENERAL CEMETERY - 1859.....	34
TAMBAROORA GENERAL CEMETERY - 1898	39
TAMBAROORA GENERAL CEMETERY - 1951	44
Submission on Rural Cemetery Reform.....	63
Submission on Rural Cemetery Reform - Addendum	71

Figures

Figure 1 - Pioneer Cemetery - A cropped area of the 1859 Plan showing proposed allotment boundaries for the Town.....	10
Figure 2 - Pioneer Cemetery - Satellite image of the Town and area of Interest - (Google Earth Pro [GEP])	11
Figure 3 - Pioneer Cemetery - Close up of the area of interest taken from Surveyor Prices 1859 Town map.	12
Figure 4 - Pioneer Cemetery - This image shows the 1859 town map overlaid on the GEP satellite image	12
Figure 5 - Pioneer Cemetery - Table of Measurements for the 1859 Tambaroora Town Plan.....	13
Figure 6 - Pioneer Cemetery - CAD drawing showing the measurements obtained from the surveyors table	14
Figure 7 - Pioneer Cemetery - CAD drawing overlaid on GEP and scaled to match GEP scale.	15
Figure 8 - Pioneer Cemetery - Close up view of the CAD drawing and the 1859 Town Map overlaid on GEP	16
Figure 9 - Bald Hill Cemetery - 1855 Quartz Claim showing the burying place	17
Figure 10 - Bald Hill Cemetery - 1859 Village of Forbes Plan	18
Figure 11 - Bald Hill Cemetery - 1894 Village Map showing the Cemetery and track passing to the east of it	19
Figure 12 - Bald Hill Cemetery - Gold Lease 144 Application showing the cemetery	20
Figure 13 - Catholic Cemetery	21
Figure 14 - Catholic Cemetery - Location of both the Chinese cemetery and the Catholic cemetery circa 1860.....	22
Figure 15 - Catholic Cemetery - Location of both the Chinese cemetery and the Catholic cemetery circa 1860	23
Figure 16 - Catholic Cemetery - Land Reserved from Sale and Lease Generally	24
Figure 17 - Catholic Cemetery - Trustees Appointed for Cemetery	24
Figure 18 - Chinese Cemetery - Cemetery Locations	26
Figure 19 - Chinese Cemetery - 1898 General, Chinese and Catholic Cemetery Locations.....	27
Figure 20 - Chinese Cemetery - Aerial Image of the Chinese Cemetery	27
Figure 21 - Hill End Cemetery - Land Withdrawn from the Hill End and Tambaroora Temporary Commonage	31
Figure 22 - Hill End Cemetery - Crown Plan 386, 1984 showing the layout of the Cemetery.....	32
Figure 23 - Hill End Cemetery - Revocation in 1896 of the Dedication of the Cemetery in 1874	33
Figure 24 - TGC 1859 - Layout of Proposed General Cemetery's.....	34

CEMETERIES OF THE TAMBAROORA

Saturday, 11 April 2026

© Warwick P Taylor 2026 – tambaroora.com

Figure 25 - TGC 1859 - Survey of the Cemetery's Location from the Town.....	35
Figure 26 - TGC 1859 - NSWGG Lands Dedicated for Public Use	36
Figure 27 - TGC 1859 - Surveyors Measurements overlaid on 1922 Hill End and Tambaroora Map	36
Figure 28 - TGC 1859 - Lot 208 with the Cemetery (dark green shading) located within.....	37
Figure 29 - TGC 1859 - Satellite Imagery showing the Cemetery overlaid on the actual ground.....	38
Figure 30 - TGC 1898 - Withdrawal of Land from the Hill End and Tambaroora Temporary Commonage	39
Figure 31 - TGC 1898 - Layout of the Cemetery	40
Figure 32 - TGC 1898 - Location of the General Cemetery	41
Figure 33 - TGC 1898 - Wesleyan Trustees Appointed	42
Figure 34 - TGC 1898 - Church of England Trustees Appointed	42
Figure 35 - Church of England Church and Graveyard	44
Figure 36 - C of E Cemetery - Meeting of Community Members to plan for the erection of a Church.....	45
Figure 37 - C of E Cemetery - Church Officially Opened.....	47
Figure 38 - C of E Cemetery - Position of the Church and Yard in Section 16 as shown on the 1859 Town Plan	48
Figure 39 - C of E Cemetery - Layout of the Church Yard in relation to Section 16	49
Figure 40 - C of E Cemetery - Drone Image showing site of the Church	50
Figure 41 - C of E Cemetery - Cleaning of the Cemetery.....	51
Figure 42 - C of E Cemetery - Ongoing Management of the Cemetery.....	52
Figure 43 - C of E Cemetery - Temporary Control of the C of E Cemetery	53
Figure 44 - C of E Cemetery - Sketch of Section 16 showing Lots 4 and 5	56
Figure 45 - C of E Cemetery - NSWGG Proposal to Resume the Dedicated Lands.....	58
Figure 46 - Revocation and Re-Dedication of the C of E Land as the Tambaroora General Cemetery	59
Figure 47 - C of E Cemetery - Trustees Appointed for the Church of England Burial Ground	60
Figure 48 - C of E Cemetery - Trustees Appointed for the Tambaroora General Cemetery.....	61

UPDATES

- 29 Aug 2024 Tambaroora General Cemetery - 1951 (formerly the C of E Cemetery 1854)*
Lot 6 Section 16 - A search at the NSW State Records for surveyor Stevenson's notes for the survey of the future Lot 6 Section 16 in 1947 has found the notes, but they have not revealed any mention of possible graves within the surveyed area.
The survey was done in preparation of handing control of the Lot to the C of E Property Trust for the C of E Burial Ground within the General Cemetery.
- 26 Aug 2024 Tambaroora General Cemetery - 1951 (formerly the C of E Cemetery 1854)*
A survey was undertaken by Mudgee Shire Council in 1997 of the cemetery, a plan was drawn showing all known grave sites and the cemetery portioned into sections with an area dedicated to the Catholic church, this plan is currently the subject of research and investigation with Mid-Western Regional Council as of 26 Aug 2024.
- 4 Sep 2024 Tambaroora General Cemetery - 1951 (formerly the C of E Cemetery 1854)*
Telecon with Mid-Western Regional Council - no documents could be found to support the plan of the General Cemetery drawn by Mudgee Shire Council in 1997. So, no explanation as to why the plan notes "unused Catholic portion", when in fact it was dedicated to the Church of England in 1951.

Acknowledgement of the Wiradjuri Nation

We would like to acknowledge and pay our respects to the traditional custodians of this land, the Wiradjuri People, and pay our respects to the elders both past, present and emerging, who's land we are on today

Acknowledgements

Kelvin F. J. Taylor, for the Imagery and Support

New South Wales Government, for Government Gazettes, Acts and Regulations

TROVE, National Library of Australia, for the references to the NSWGG Gazettes, Newspapers and Publications

Hill End and Tambaroora Gathering Group

*This is an ongoing Project and contributions
or corrections are ongoing and appreciated*

Interpretation and definition of words, phrases and locations

Words and Phrases

The term graveyard is often used interchangeably with cemetery but primarily referred to a burial ground within a churchyard ([Wikipedia](#)). While churchyards can be any patch of land on church grounds, historically, they were often used as graveyards (burial places).

Locations

Where a geographical feature is mentioned, it has been found that some have had their location moved either through deliberate change OR lack of local knowledge, an example is Bear and Specimen Gullies, both appear to have moved and now refer to different gullies from those originally noted on earlier maps and plans.

PIONEER CEMETERY - 1852

Identifying the Location

Apart from the Church of England graveyard and the Catholic cemetery there are several references made to another cemetery, aka the burying ground or burial ground between 1852 and 1859.

A letter from a committee formed by the Church of England (C of E) residents of Tambaroura dated October 1852 making application for an allotment of land for the erection of a Church and School, included in the application was also for a piece of land presently being used as a burial ground, there already being 10 interments within the ground. Although no location is noted for this burial ground it precedes the first known graveyard created by the C of E in 1854 by at least 18 months. No other mention is made relating to the resident request for the burial ground, their application was approved only for land for a church, school and parsonage, even the location requested was changed from behind the barracks to further out of town to the future Section 16 as eventually surveyed in 1859.

An article in the Sydney Morning Herald describing the finding of a deceased Chinaman approximately 300 yards behind the burying ground near Mr. Cullen's slaughtering yard. Another article in the Maitland Mercury and Hunter River General Advertiser describes the location of the Chinaman found deceased behind Cullen's slaughtering yard.

Three slaughter yards have been identified in the town in 1858 but only one appears to fit the description given in the above newspaper articles. The boxed area in the top right of figure one below is noted as being a slaughter yard in the 1859 plan. The Sydney Morning Herald article notes the person was found deceased 300 yards behind the burying ground near Cullen's slaughter yard, the distance from the cemetery (burying ground) to Cullen's slaughtering yard is approximately 220 yards but the second article from the Maitland Mercury notes the deceased person was found behind Cullen's slaughter yard putting a greater distance between the cemetery (burying ground) and the deceased person. Not knowing the distance that the deceased person was behind Cullen's slaughter yard from the second article it could be considered that the approximate distance of 300 yards from the burying ground is feasible.

Another reference found is the 1859 town plan by surveyor Price, this shows the location of a cemetery and is notated as such in figure one. The purpose of this 1859 plan was to formalize the layout of the town in preparation for the towns naming in 1860. The plan shows the result of surveyor Prices efforts, what he saw on the ground at the time is what he reproduced in this plan. Hence the cemetery and slaughter yards were in situ at the time of the survey.

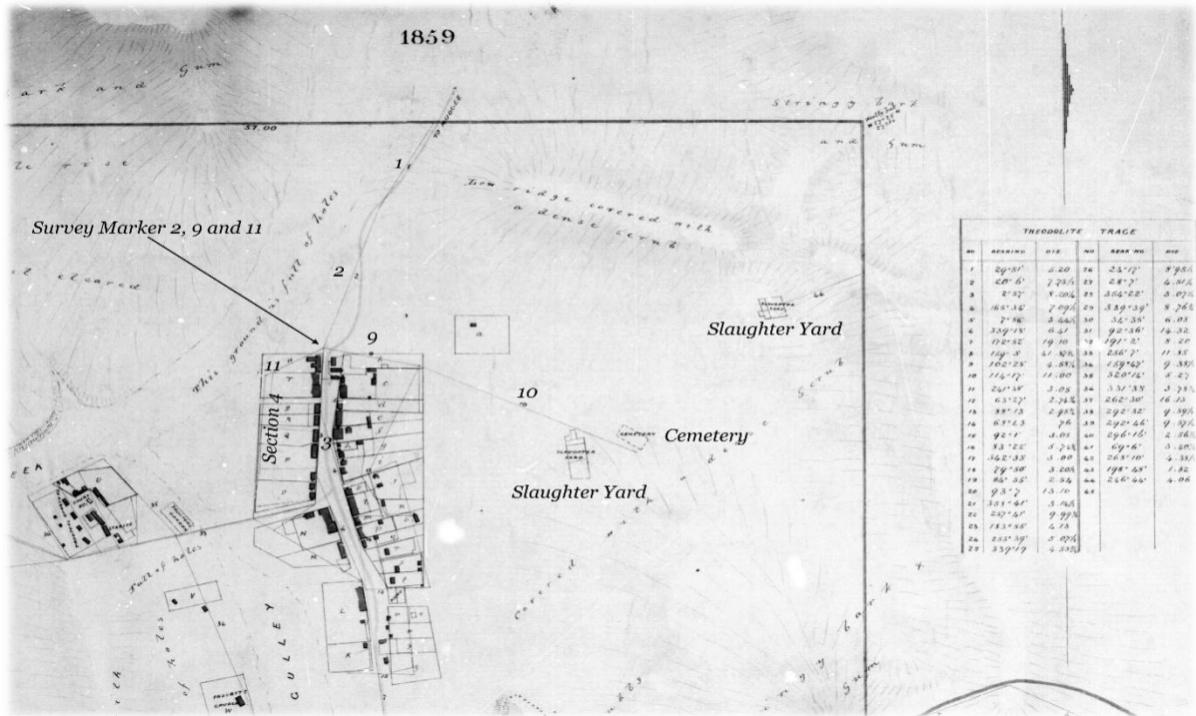
What has been found is that in articles describing locations in and around the town, the word "behind" has been used to describe a site or event that is further from the centre of town than the site being used as the reference e.g., "the Watch House is located behind the Railway Hotel", indicating the Watch House is not only behind but is also further away from the centre of town than the Railway Hotel is.

CEMETERIES OF THE TAMBAROORA

Saturday, 11 April 2026

© Warwick P Taylor 2026 – tambaroora.com

Figure 1 - Pioneer Cemetery - A cropped area of the 1859 Plan showing proposed allotment boundaries for the Town



The survey marker used for survey lines 2, 9 and 11 no longer exists, it was a casualty of a hydraulically sluiced area. No trace on ground has been found of a replacement. All subsequent plans produced in 1859 and 1860 show the cemetery in the same position, this is the result of copying from the original 1859 map and the area not being re-surveyed, these later maps show the shape of the cemetery and the slaughter yards but none note them by name. Later charting plans do not show the cemetery.

The New South Wales Government Act¹, "No. XXX. An Act to amend the Law relating to the Slaughtering of Sheep, Cattle, and other Animals within certain Towns in the Colony of New South Wales, and for the prevention and removal of certain Nuisances therein" states that slaughter yards are no longer to operate within a towns boundary, established slaughter yards were able to continue but their licenses would not be renewed after 5 years.

This could be why the names no longer appeared on the town maps.

August 2018 - The Hill End Story² notes the establishment of a boiling down works by one of the Treweeke brothers in Tambaroora, the purpose of the works was to process stock either injured or unmanageable whilst en route to market. It was located on a hillock west of the "current" cemetery.

Depending on the age of the authors source the cemetery mentioned could be the Pioneer cemetery.

To clarify this, if the authors source material is dated between the 1840s early 1850s then the cemetery mentioned would be the pioneer cemetery in Figure 1 above as it is shown on Prices 1859 Town map due east of a slaughter yard as can be seen in the above town plan. Hodge may not have been aware of the existence of the pioneer cemetery and assumed that the mention made of the cemetery was to the former Church of England Cemetery now the General Cemetery.

The chapter also noted that two skeletons were found buried on the site many years previous, I am assuming that the "many years previous" is referring to a period prior to the books publication. The skeletons were re-buried on orders of the Police. These skeletons would have been interments in the Cemetery which would have remained unknown to those who later found the remains. Again, Hodge may have assumed that the reference to the cemetery was to the current General Cemetery.

¹ New South Wales Government Gazette, No.119, p.97 dtd 11 Oct 1850

² Publication, Hill End Story, Book One, ch.5, p.25, HODGE Harry, 1973

CEMETERIES OF THE TAMBAROORA

Saturday, 11 April 2026

© Warwick P Taylor 2026 - tambaroora.com

A search of the NSW Police Gazettes for the period 1881 to 1940 did not reveal any mention of skeletons found in the Tambaroora District. (The search used was a name search "skeleton" on the PDF files)

No mining activity has been identified in this area; the Tambaroora and Turon River Gold Field Map of 1877 does not show any Leases being applied for or issued. Later mining applications from post the 1874 Mining Act again show no activity in the area. In 1893 the area was surveyed by surveyor Blackett for the development of suburban lots in the north east corner of the town. No indication of the cemetery is shown nor is any mention made in his survey notes. The area does appear to have a history of slaughter yards with the addition of two other yards either still operational at the time of the 1893 survey or their remnants were visible to the surveyor, these yards are positioned just to the east of where the cemetery is located. This could indicate that the cemetery area has been well trodden by stock movement over the preceding years.

Using the scale on the 1859 plan the measurement of the cemetery is 90 feet x 45 feet or 136 links x 68 links, again GEP has been used to determine the size.

Known Early Deaths at Tambaroora

At least ten pre 1854 deaths have now been recorded.

Surveying the Site

Figure 2 - Pioneer Cemetery - Satellite image of the Town and area of Interest - (Google Earth Pro [GEP])



CEMETERIES OF THE TAMBAROORA

Saturday, 11 April 2026

© Warwick P Taylor 2026 - tambaroora.com

Figure 3 - Pioneer Cemetery - Close up of the area of interest taken from Surveyor Prices 1859 Town map.

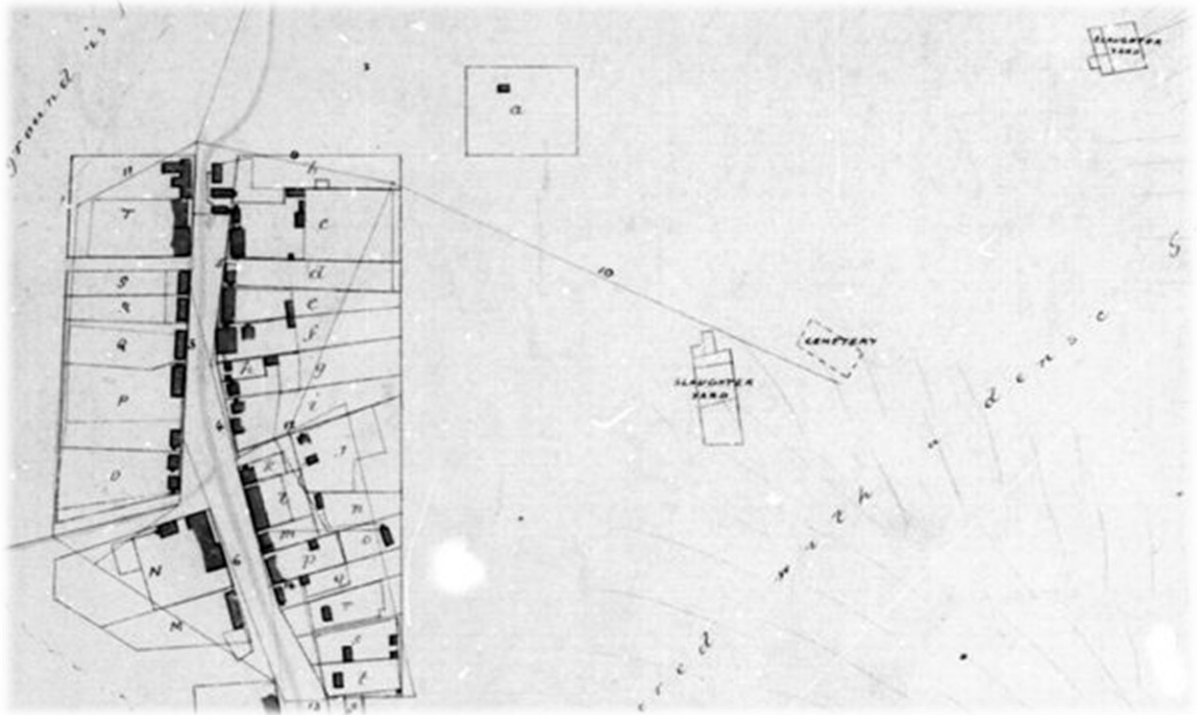
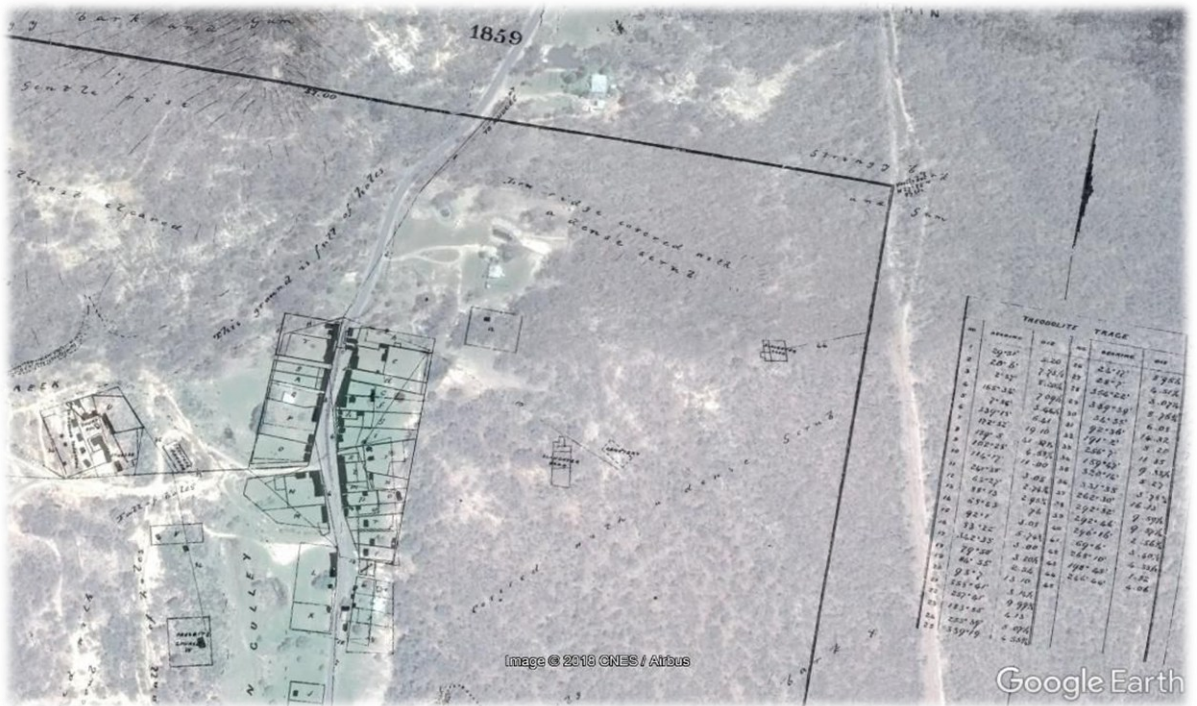


Figure 4 - Pioneer Cemetery - This image shows the 1859 town map overlaid on the GEP satellite image



Certain man made features are still in existence and can be identified on both the GEP satellite image (Figure 2) and the 1859 town map (Figure 3), in particular Lots 5 and 6 of Section 4 (Hodges property), Lot 5 of Section 6, Lots 1, 2, 3 and 4 of Section 8 and the Church of England site on Lot 2 Section 16. These points allowed to accurately site the overlay map on the GEP satellite image (Figure 4) and confirmed the magnetic variation for circa 1859.

CEMETERIES OF THE TAMBAROORA

Saturday, 11 April 2026

© Warwick P Taylor 2026 - tambaroora.com

To determine the location of the pioneer cemetery(PC) I used the surveyors table of measurements at (Figure 5) to create a drawing to reflect those measurements which appear to be specific to finding the site of the Pioneer cemetery (Figure 6).

Figure 5 - Pioneer Cemetery - Table of Measurements for the 1859 Tambaroora Town Plan

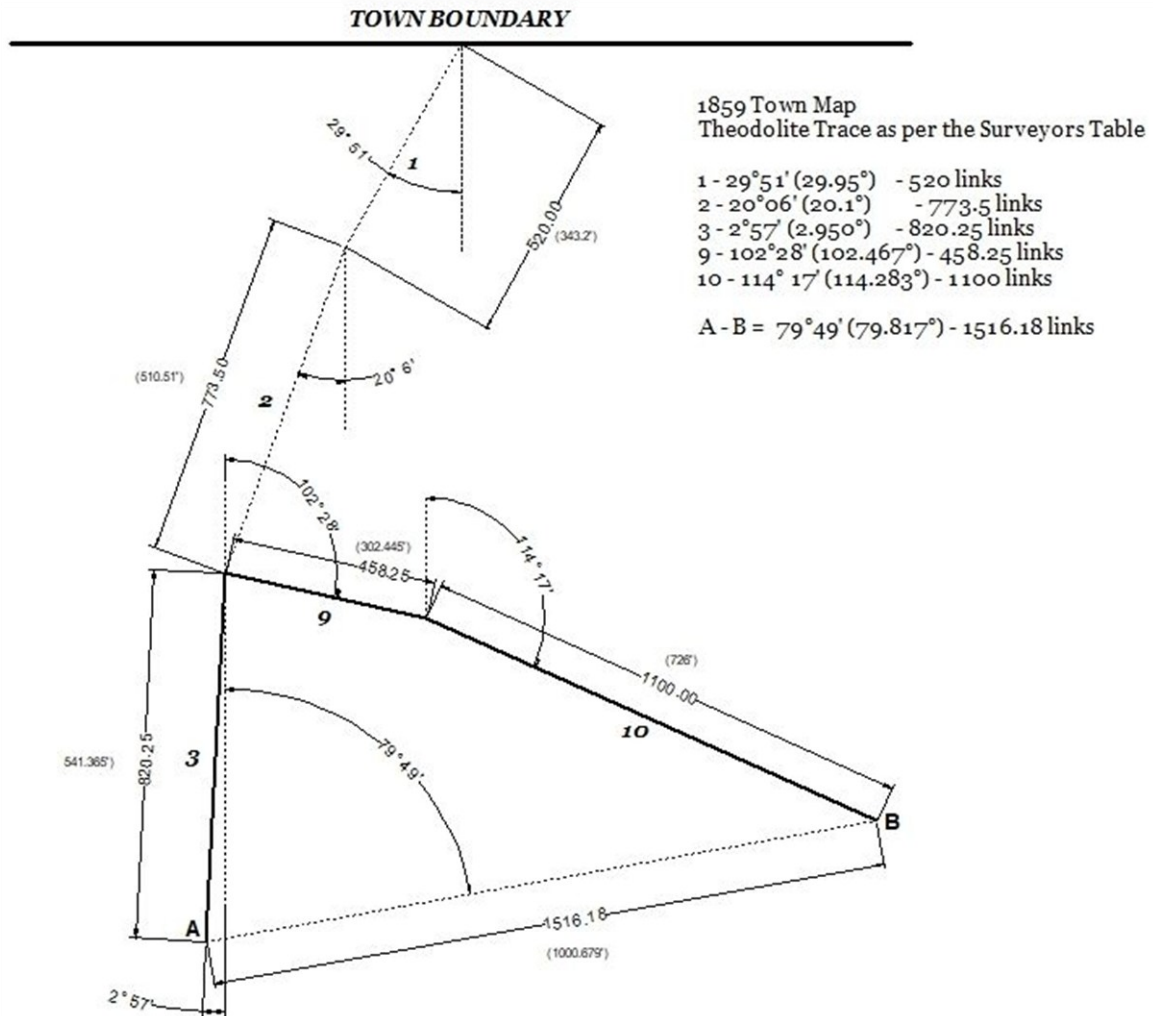
THEODOLITE TRACE					
NO	BEARING	DIS	NO	BEARING	DIS
1	29°51'	5.20	26	24°17'	8'95½
2	20°6'	7.73½	27	28°7'	4.51½
3	2°57'	8.20¼	28	354°22'	3.07¼
4	165°34'	7.09½	29	339°39'	8.76¾
5	7°56'	3.44½	30	34°35'	6.08
6	339°15'	6.41	31	92°36'	14.32
7	172°52'	19.10	32	191°2'	8.20
8	159°3'	41.87¾	33	256°7'	11.85
9	102°28'	4.58¾	34	159°47'	9.38½
10	114°17'	11.00	35	320°14'	5.27
11	241°38'	3.05	36	331°33'	3.78¾
12	63°27'	2.74¾	37	262°30'	16.13
13	88°13'	2.95¾	38	292°32'	9.59½
14	68°43'	76	39	292°46'	9.57¼
15	92°1'	3.08	40	296°16'	2.56¾
16	83°22'	5.74¾	41	69°6'	3.40½
17	342°33'	3.00	42	268°10'	4.38½
18	79°50'	3.20½	43	198°48'	1.82
19	84°55'	2.54	44	246°44'	4.06
20	93°7'	13.10	45		
21	355°41'	3.14½			
22	257°41'	9.99¾			
23	183°55'	4.13			
24	255°39'	5.07½			
25	339°19'	4.53¾			

CEMETERIES OF THE TAMBAROORA

Saturday, 11 April 2026

© Warwick P Taylor 2026 - tambaroora.com

Figure 6 - Pioneer Cemetery - CAD drawing showing the measurements obtained from the surveyors table



The drawing was then overlaid on the 1859 town map in GEP and manipulated to match the magnetic variation and layout of the town. Particular attention was paid to the following in (Figure 7), the "TOWN BOUNDARY" line from the CAD drawing matched the 1859 maps town boundary, the eastern boundary of Section 4 and Line No.3 in the CAD drawing were in alignment as this represented an existing man made feature of a straight line being the front boundary fences of Section 4, and all measurements were checked using the measuring tool in GEP to ensure that the measurements produced by GEP matched those of the drawing, this confirmed that the overlay was to the correct scale and orientation.

CEMETERIES OF THE TAMBAROORA

Saturday, 11 April 2026

© Warwick P Taylor 2026 - tambaroora.com

Figure 7 - Pioneer Cemetery - CAD drawing overlaid on GEP and scaled to match GEP scale.



Line 3 = 820.25 links / 541.365 feet - Line 9 = 458.25 / 302.445 feet - Line 10 = 1100 links / 726 feet

Figure 8 below shows a close-up view of the CAD drawing and the 1859 Town Map overlaid on GEP and scaled to match GEP scale. The red lines were input by GEP from the CAD drawing and as can be seen they overlay exactly the lines shown on the 1859 map, this speaks volumes as to the accuracy of the Surveyors measurements and scaling of the images. The only exception is the end of Line 10 shown at "B", on the 1859 map it overshoots the red line by 12 feet.

Figure 8 - Pioneer Cemetery - Close up view of the CAD drawing and the 1859 Town Map overlaid on GEP



The end result being a location at the end of Line 10 at point "B" Lat: -32.996666° Long: 149.427521°, which I can only assume is for the cemetery, from the close up image above it can be seen that Line 10 does not go to a survey marker that is in contact with the cemetery. In attempting to site the cemetery accurately all that could be done was to measure the distance and angle from the end of Line 10 at point B to what I could only assume was the centre of the cemetery marked on the map.

To date (2018) no surveyors' notebook has been found for surveyor Prices survey of the town.

Ground Penetrating Radar was Undertaken on the Site in November 2017

A GPR survey was undertaken by Doctor Louise Steding PhD^{3,4} and her team on this cemetery in Nov 2017 but the site could not be accurately identified as the cemetery was never accurately surveyed, and its location was reliant on the accuracy of the town maps available at the time.

³ Steding Louise, PhD (Arch/Crim), B.A. Hons (Arch/Soc), ANZFSS, AACAI - www.coldcase.au

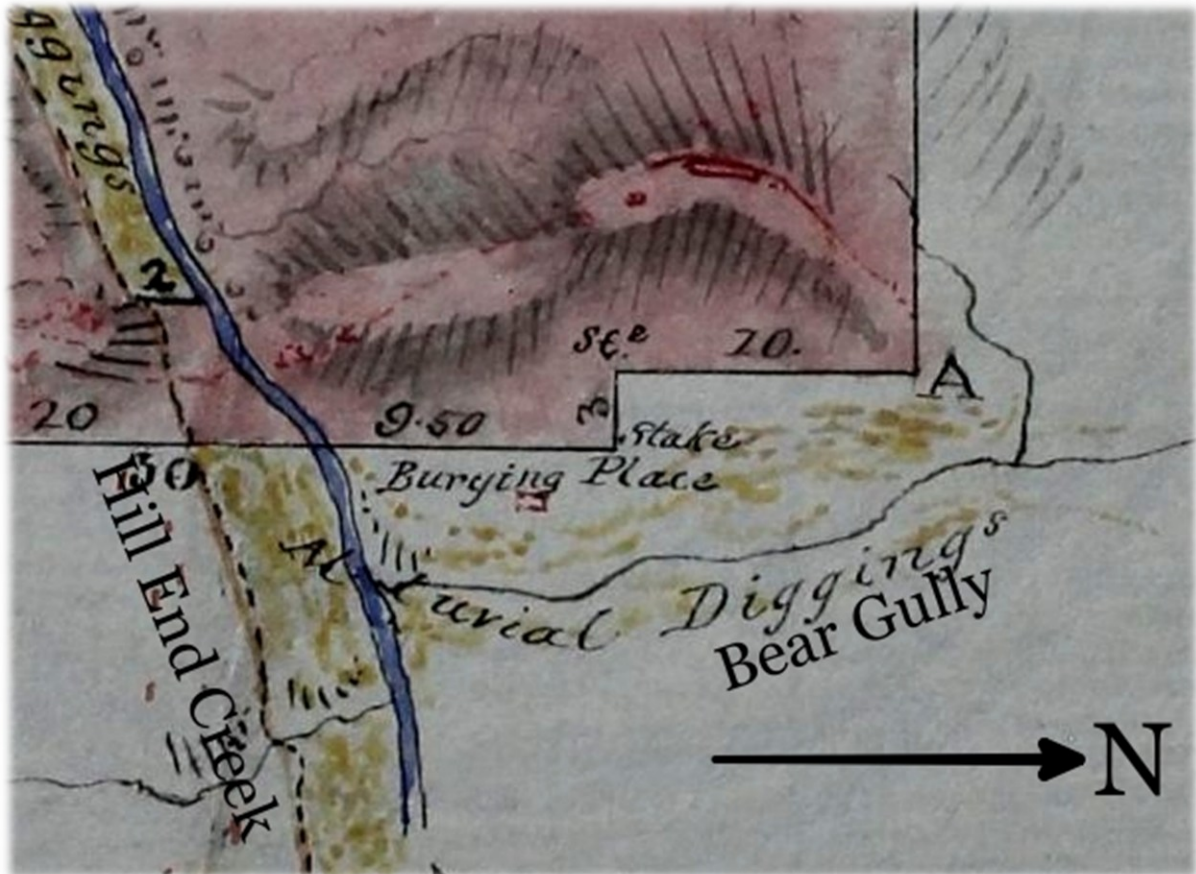
⁴ Steding Louise, PhD, A Search for Three Cemeteries at Hill End and Tambaroora Using Ground Penetrating Radar, Steding Associates, 2018.

BALD HILLS CEMETERY - Circa 1850's

Numerous mentions have been made about this cemetery, parish, village maps and gold lease plans show its location. It is situated on or under Warrys Road just past the village camping ground, its beginning is unknown as are its size and number of interments. Expansion of the alluvial fields immediately surrounding it would have seen its closure.

The 1855 plan below (Figure 9) of S.B. Sergeants quartz claim⁵ notes a "burying place" on the plan to the west of what was known as Bald Hill Creek, now known as Hill End Creek.

Figure 9 - Bald Hill Cemetery - 1855 Quartz Claim showing the burying place



⁵ Plan of 160 acres in the County of Wellington, head of Bald Hill Creek embracing Wythers now Sergeants Quartz Claim, 20 Feb 1855

CEMETERIES OF THE TAMBAROORA

Saturday, 11 April 2026

© Warwick P Taylor 2026 - tambaroora.com

The portion of the 1859 Village of "Forbes" map below (Figure 10) shows its location to the west of the village overlooking an unnamed creek which was to be later known as Bear Gully⁶.

Figure 10 - Bald Hill Cemetery - 1859 Village of Forbes Plan



The 1894 Village map below (Figure 11) shows the cemetery sited to the west of the track

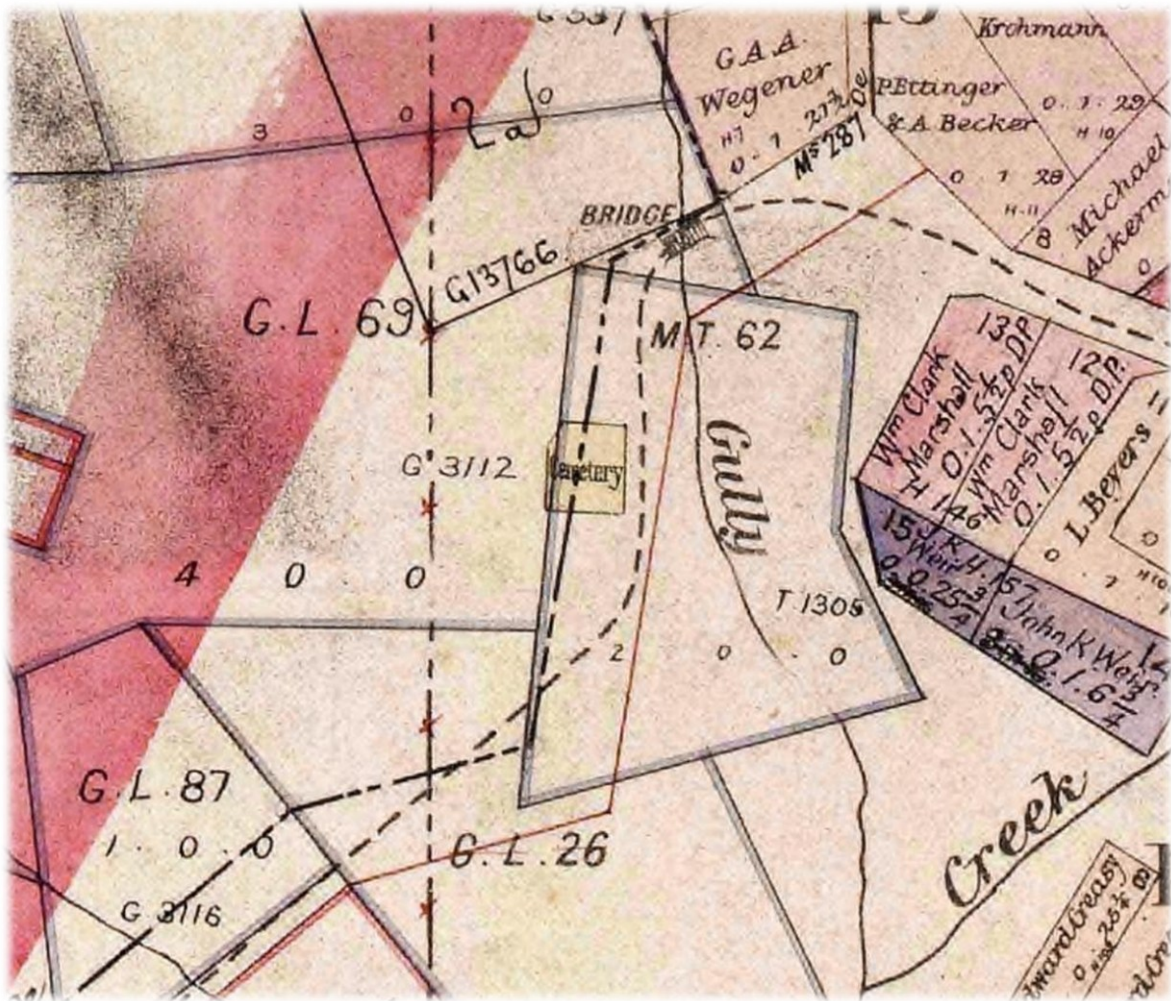
⁶ Plan, Shewing the proposed boundaries for a village at the Bald Hills, and the arrangement into blocks of improvements within them, 1859 now village of "Forbes"

CEMETERIES OF THE TAMBAROORA

Saturday, 11 April 2026

© Warwick P Taylor 2026 - tambaroora.com

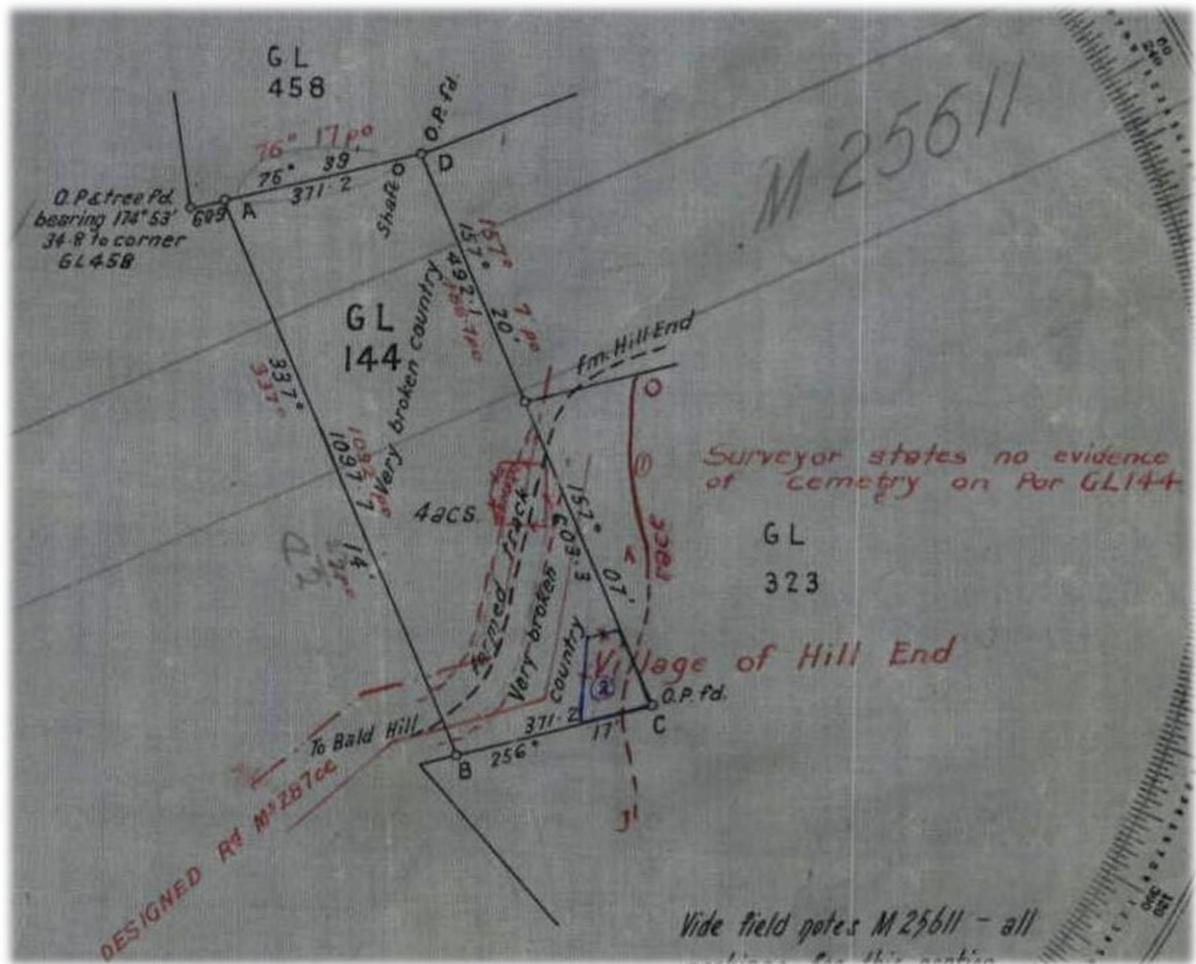
Figure 11 - Bald Hill Cemetery - 1894 Village Map showing the Cemetery and track passing to the east of it



An application for a Gold Lease No.144 below (Figure 12) shows in red the cemetery but is annotated by the surveyor that there was no evidence of cemetery on Portion GL 144. Although, interestingly the surveyor has noted on the application that the Cemetery area was about twelve perches⁷. The survey has also shown a formed track from Hill End, also a designed road (Ms.287cc) both of which pass over the site of the cemetery.

⁷ Gold Lease Application GL144, dated 12 May 1951

Figure 12 - Bald Hill Cemetery - Gold Lease 144 Application showing the cemetery



Erosion from Bear Gully has seen a later change in the roads path with it moving slightly to the west which appears to have encroached more on the cemetery. There are reports that flash flooding eroded the banks of the gully to such an extent that it exposed coffins, some of which were washed away.

Ground Penetrating Radar was Undertaken on the Site in November 2017

A GPR survey was undertaken by Doctor Louise Steding PhD^{8,9} and her team on this cemetery in Nov 2017 but the site could not be accurately identified as the cemetery was never officially surveyed and its location was reliant on:

- the accuracy of the parish and village maps and mining application plans available at the time,
- research undertaken previously, and
- local knowledge as passed down over time.

Extensive soil erosion and a deep gully and later road re-alignments also hindered its placement.

⁸ Steding Louise, PhD (Arch/Crim), B.A.hons (Arch/Soc), ANZFSS, AACAI - www.coldcase.au

⁹ Steding Louise, PhD, A Search for Three Cemeteries at Hill End and Tambaroora Using Ground Penetrating Radar, Steding Associates, 2018.

CATHOLIC CEMETERY - Tambaroora

Figure 13 - Catholic Cemetery



Image Courtesy of Kelvin Taylor

Status

Lot - 7316

DP - 1156884

Situation - Crown Land¹⁰

Early mentions of the cemetery have only described it as “cemetery”, references to the site did not include that it was the Catholic cemetery.

A Gold Lease application made in 1896 for Gold Lease 111¹¹ shows on the application the position of the cemetery in relation to the Gold Lease and a partial survey completed for the southern boundary of the cemetery, no denomination noted. 1908 saw another gold lease application number 230¹² note the cemetery surveyed within the proposed gold lease, mention being made that the land was reserved but no denomination mentioned. Again in 1936 an application for gold lease 435¹³ shows the cemetery and surveyed measurements with a notation “Cemetery. Fenced with netting R50760-1 for Cemetery not’d 23.8.15”, the fence line lengths as recorded were confirmed in 2017 by Kelvin Taylor using GPS and surveyors measuring wheel. Again, no denomination mentioned.

¹⁰ Input Ref: 7316/1156884, Prior Title Search, NSW Land Registry Services

¹¹ Plan of Portion GL111, Application No.1758, G11513

¹² Plan of Portion GL230, Application No. 40, G17360

¹³ Plan of Portion GL435, Application No.531, G22372

CEMETERIES OF THE TAMBAROORA

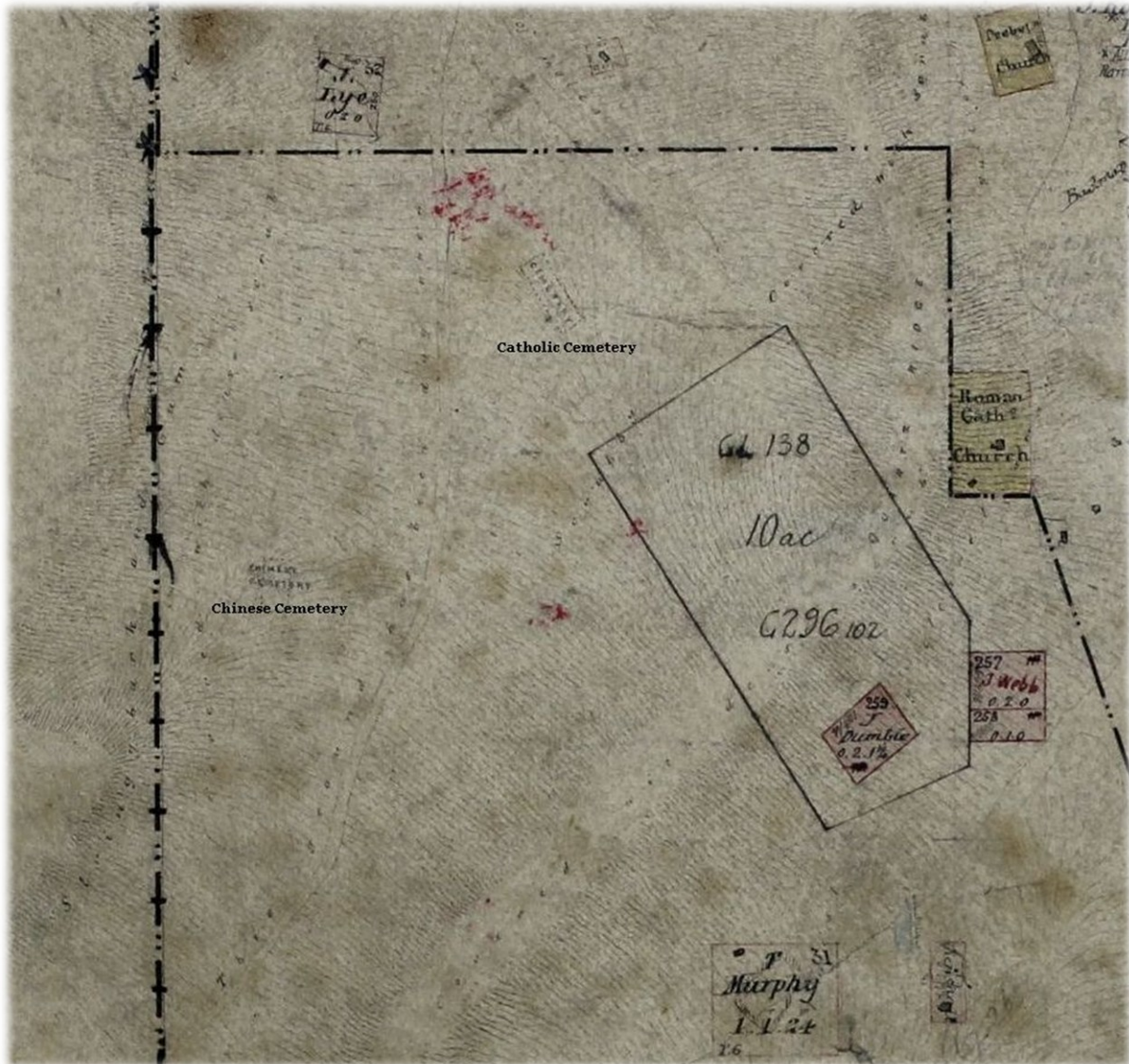
Saturday, 11 April 2026

© Warwick P Taylor 2026 – tambaroora.com

Both the Chinese and Catholic Cemeteries are located within what was known as Burying Ground Gully later known as Moonlight Creek or Gully.

The cropped image below (Figure 14) of the 1859 Town Charting Plan shows a cemetery located in the position of the current Catholic Cemetery, the surveyor has only indicated that there was a cemetery on that site, no reference being made to the denomination.

Figure 14 - Catholic Cemetery - Location of both the Chinese cemetery and the Catholic cemetery circa 1860



Plan of the Chinese and unknown Cemetery on the 1859 Town Plan
Plan Courtesy of the NSW State Archives and Records

One of the earliest mentions of the cemetery by denomination was on 16 December 1871 when reference was made of the “[Catholic Burying Ground, Tambaroora](#)” when George Edward Wright applied to register a dam for domestic purposes of 40 yards x15 to 20 yards near the burying ground. The dam was constructed by John Kelly and John Hanshaw and then given to the applicant¹⁴.

¹⁴ Register for Dams, Reservoirs, and Wells for Domestic Purposes, 1868-1893, HETGG

CEMETERIES OF THE TAMBAROORA

Saturday, 11 April 2026

© Warwick P Taylor 2026 - tambaroora.com

The image below (Figure 15) shows the position of the Catholic Cemetery, the Chinese Cemetery and the General Cemetery that was surveyed in 1897 and dedicated in 1898.

Figure 15 - Catholic Cemetery - Location of both the Chinese cemetery and the Catholic cemetery circa 1860



Location of the Catholic, Chinese and General Cemetery dedicated in 1898
Image from Google Earth Pro, Trace Lines drawn by Warwick P Taylor 2017

It appears that this cemetery had escaped any official recognition until 1915 when a notice was placed in the Government Gazette¹⁵ (Figure 16).

¹⁵ NSWGG, No.112, p.3690, dtd 23 Jun 1915 [7785]

Figure 16 - Catholic Cemetery - Land Reserved from Sale and Lease Generally

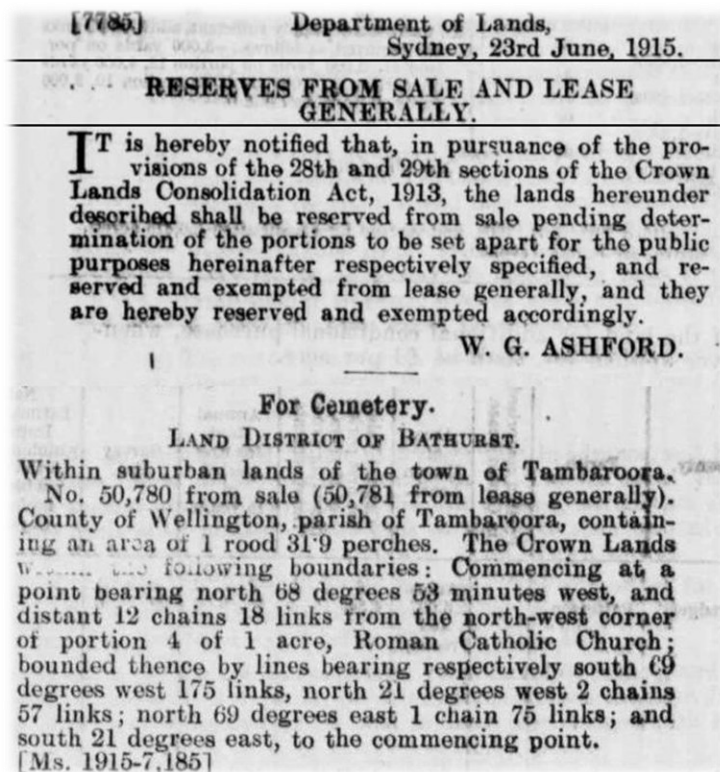


Image Courtesy of TROVE, National Library of Australia

The Cemetery was established well before the above date as indicated by the interments already in existence.

November 1915 saw the first official Trustees appointed for the Cemetery¹⁶ (Figure 17)

Figure 17 - Catholic Cemetery - Trustees Appointed for Cemetery

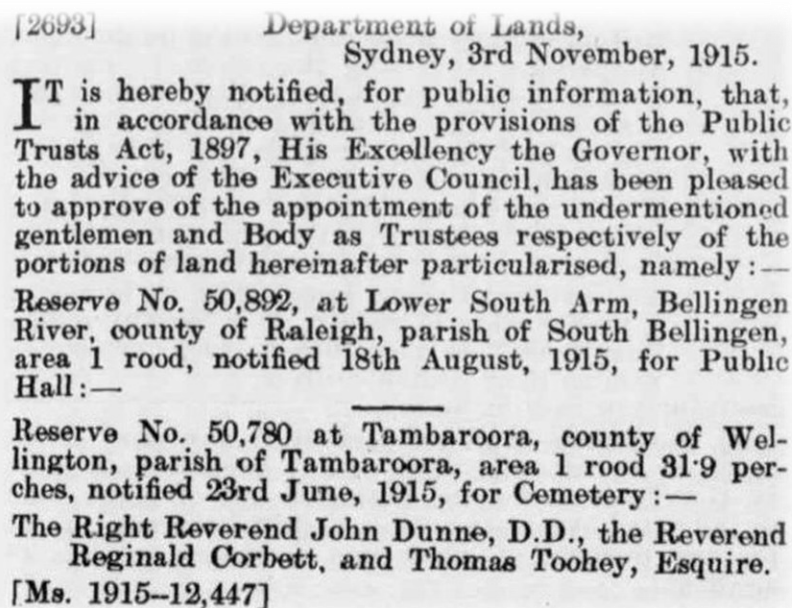


Image Courtesy of TROVE, National Library of Australia

¹⁶ NSWGG, No.198, p.6399, dtd 3 Nov 1915 [2693]

CEMETERIES OF THE TAMBAROORA

Saturday, 11 April 2026

© Warwick P Taylor 2026 – tambaroora.com

NOTE

There is now some confusion as to the correct Lot and DP number for the cemetery:

- *Bathurst Regional Local Environmental Plan 2014 (2014 No.729), Schedule 5, Environmental Heritage List has the cemetery listed as being Lot 189 DP 756905, which I know is incorrect, whereas*
- *NSW Governments Land Registry Services SIX Map has it noted as being Lot 7316 DP 1156884.*

CHINESE CEMETERY

Status

Lot - Not numbered

DP - Located with in DP1156884

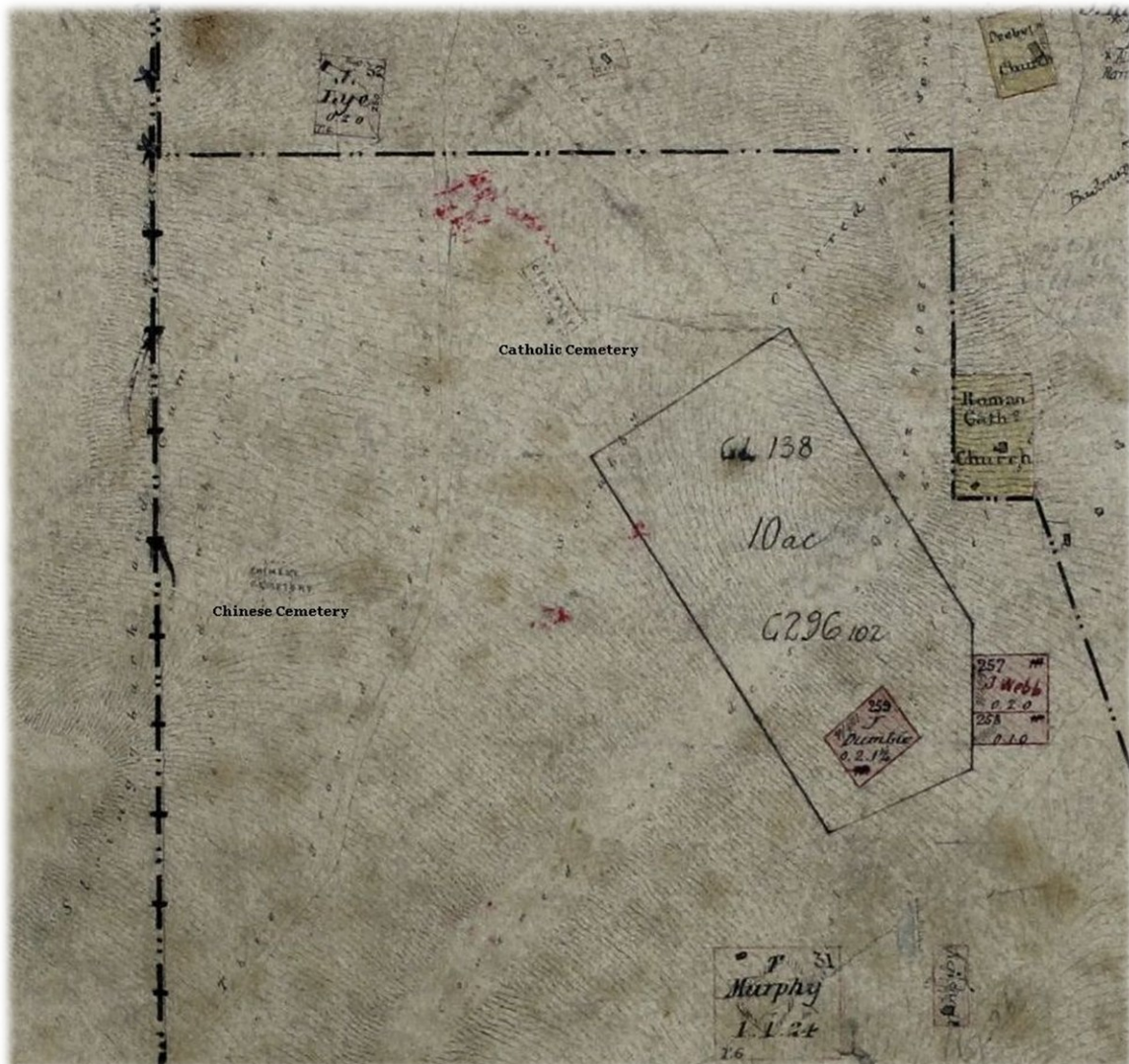
Lat = -33.000779 - Lon = 149.417426

Situation - Listed in the Register of the National Estate

Located on the Towns western boundary its location is identified on the 1859 Town Charting Plan(Figure 18), this map and the 1860 map are the only maps that verify its existence. It just like the Catholic cemetery have never been officially surveyed. Even though they were functioning cemeteries at the time of the survey undertaken by Surveyor Price they seem to have been over-looked even though they were both identified by the surveyor on his plans.

The Cemetery is listed on the Commonwealth Register of the National Estate¹⁷.

Figure 18 - Chinese Cemetery - Cemetery Locations



Location of both the Chinese and Catholic Cemeteries from the 1859 Town Charting Plan
Plan Courtesy of the NSW State Archives and Records

¹⁷ Australian Heritage Database, Department of the Environment, Australian Government

CEMETERIES OF THE TAMBAROORA

Saturday, 11 April 2026

© Warwick P Taylor 2026 - tambaroora.com

The image below (Figure 19) shows the position of the Catholic Cemetery, the Chinese Cemetery and the General Cemetery that was surveyed in 1897 and dedicated in 1898.

Both the Chinese and Catholic Cemeteries are located within Burying Ground Gully later known as Moonlight Creek or Gully.

Figure 19 - Chinese Cemetery - 1898 General, Chinese and Catholic Cemetery Locations



Location of the Catholic, Chinese and General Cemetery dedicated in 1898
Image from Google Earth Pro, Trace Lines drawn by Warwick P Taylor 2017

Figure 20 - Chinese Cemetery - Aerial Image of the Chinese Cemetery



Chinese Cemetery - 2017
Image by Kelvin Taylor 2017

Records Pertaining to the Chinese Cemetery held by Government Organisations

The Department of the Environment and Energy's Australian Heritage Database - 1991

Tambaroora Chinese Cemetery, Hill End NSW, Australia

Photographs None

List Register of the National Estate (non-statutory archive)

Legal Status Registered (14/05/1991)

Place ID 467

Place File No. 1/03/202/0015

Statement of Significance

Scattered evidence of the initial burial place of many Chinese who died at the Chinese camp of the 1850s to 1880s near Hill End, which is important for its historic associations with the Chinese who played a major role in the gold rush to that area. (Criteria H.1 and A.4)

It is important for its rarity in demonstrating the Chinese burial practice of initial burial in urns and later transporting the urns to China for reburial. (Criterion B.2)

It has potential for archaeological investigation. (Criterion C.2)

Official Values Not Available

Description

Cleared creek flat. The site consists of a scattering of depressions and mounds. The area is surrounded by remains of a leather strap which was once supported on wooden posts delineating the cemetery boundary.

Condition and Integrity

The site has been little disturbed since exhumation of bodies around the turn of the century, due to foot access only and the fact that its location is not widely known or publicised. According to cultural tradition many bodies were exhumed by agents of families or country societies and transported to China for reburial. Excavation in the area in 1978 revealed an urn with bones intact. The urn was replaced. It is assumed that other urns remain.

Location

About 3.5 km north of Hill End and 250 m west of Tambaroora Catholic cemetery, at approximate AMG point: 8731 - I and IV - 25754585

Bibliography

National Parks and Wildlife Service

The National Parks and Wildlife Service - 2013

*The following information has been extracted from -
The National Parks and Wildlife Service (NPWS) notes in its 2013 Master Plan:*

National Government: The Commonwealth Register of the National Estate has listings for a Hill End Historic Conservation Area, Great Western Store and former Post Office, Royal Hotel, St Pauls Presbyterian Church, Golden Gully, and the Tambaroora Chinese Cemetery, which is outside the Historic Site of the NPWS. (p.1).

*Table 2: Chronology of Events
1858 Chinese Cemetery (p.23)*

Cemeteries

There is a Tambaroora Catholic cemetery to the south of Tambaroora, on the west of Mudgee Road and a general cemetery (Anglican) on the eastern side of the road.

There is also a Chinese cemetery further to the west of the Catholic cemetery that is less defined, as the bodies were exhumed at the end of the 19th century. The site demonstrates the burial practices of the Chinese, with an initial burial in an urn and then later repatriation of the bodies back to China.⁽⁴³⁾ The Chinese cemetery is listed on the Register of the National Estate and there is evidence of archaeological potential. (p.33) (43) - Australian Heritage Database

Table 7: Levels of Significance of Study Area Elements

Cemeteries: Catholic, Anglican and Chinese at Tambaroora, Significance: Exceptional (p.49)

Location

The cemetery is sited on the western side of a creek or gully known as either Moonlight Creek or Moonlight Gully, there is a difference of opinion between some of the residents as to the correct name of the feature. Moonlight Gully is recorded on some geographical maps as being located to the west of the cemetery approximately 900 metres. The gully was formerly known as Burying Ground Gully as the Roman Catholic Cemetery is also located in this area.

Access to the Cemetery

The details from the National Heritage Database states that there was only foot access to the cemetery, the vehicular track to the cemetery now would have been made at the time of the investigation of the cemetery in 1978.

Cemetery Fence

Mr. Robert Fraser, a prominent local resident of Tambaroora and living in proximity to the cemetery recalls from his youth a picket or paling fence surrounding the cemetery. Remnants of metal strapping has been found around the perimeter of the cemetery, it was common practice that metal strapping was used to secure the pickets or pales to the slip rails that were placed between the posts. The remnants of the strapping are all that is left after it had been discarded when the fence was replaced with a barbed wire one. The chisel pointed Rose nails still found on the strapping was found to be in common use around the 1870s and 1880s and appear to have disappeared around the depression of 1893¹⁸.

Ground Penetrating Radar (GPR) Study Undertaken in 2017

In November 2017 a GPR survey was undertaken on the Chinese Cemetery, results of this survey have been published^{19,20}.

A Study of the Cemetery conducted by Doctor Juanita Kwok in 2018

A comprehensive account of the “Chinese in Bathurst” written by Doctor Juanita Kwok in 2018 gives a detailed study of the Cemetery²¹.

¹⁸ Papers on Australian Historical Archaeology, p.108

¹⁹ The Chinese in Bathurst: Recovering Forgotten Histories, Juanita Kwok, Pg.324, 3 Aug 2018

²⁰ Steding Louise, PhD, A Search for Three Cemeteries at Hill End and Tambaroora Using Ground Penetrating Radar, Stedinger Associates, 2018.

²¹ The Chinese in Bathurst: Recovering Forgotten Histories, Juanita Kwok, Pg.316, 3 Aug 2018

**CHURCH OF ENGLAND GRAVEYARD - 1854 (see TAMBAROORA
GENERAL CEMETERY - 1951)**

Please read the [9. Tambaroora General Cemetery - 1951](#) for a complete history of both the Church of England Graveyard 1854 and the Tambaroora General Cemetery 1951

HILL END CEMETERY - 1874

Land was withdrawn from the Hill and Tambaroora Temporary Common in 1874 for a Cemetery (Figure 21) to be sited on the Bathurst Road near present day "Sarnia". The Government Gazette notification below details its location.

Figure 22 shows the siting of the Cemetery.

Figure 21 - Hill End Cemetery - Land Withdrawn from the Hill End and Tambaroora Temporary Commonage

[1590]

Department of Lands,
Sydney, 29th July, 1874.

WITHDRAWAL FROM TEMPORARY COMMON AT TAMBAROORA AND HILL END, FOR CEMETERY AT HILL END.

HIS Excellency the Governor, with the advice of the Executive Council, directs it to be notified, that the portion of land hereafter described has been withdrawn from Temporary Commonage at Tambaroora and Hill End, for Cemetery at Hill End.

JAMES S. FARNELL.

County of Wellington, parish of Carroll, 8½ acres. The portion of Temporary Commonage, Tambaroora and Hill End as notified 8th February, 1870, within the following boundaries: Commencing at a point east 8 degrees 5 minutes south, and distant 2 chains 15½ links from the south-west corner of A. Le Messurier's portion 56 of 2 acres; and bounded on the north by a line east 8 chains; on the east by a line south 10 chains 38 links; on the south by a line west 8 chains; and on the west by a line north 10 chains 38 links, to the point of commencement.

[Ms. 73-6,907]

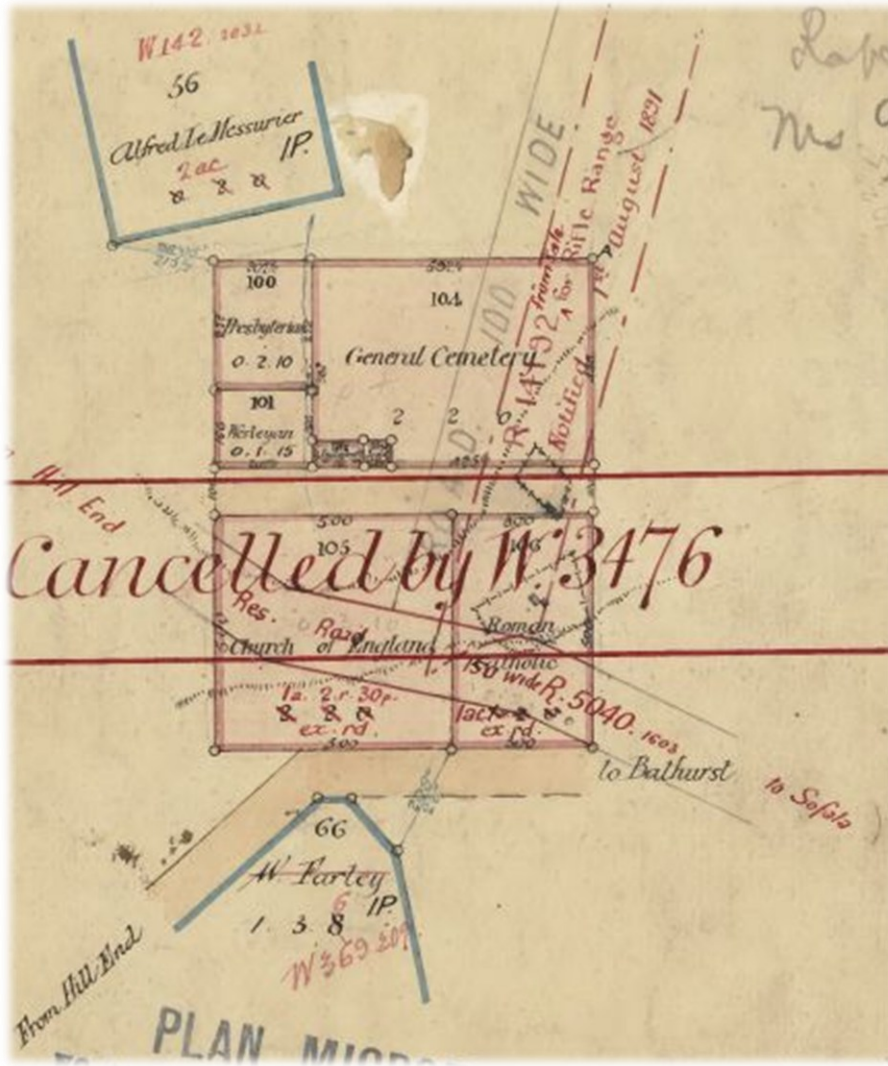
Image Courtesy of TROVE, National Library of Australia

CEMETERIES OF THE TAMBAROORA

Saturday, 11 April 2026


© Warwick P Taylor 2026 - tambaroora.com

Figure 22 - Hill End Cemetery - Crown Plan 386, 1984 showing the layout of the Cemetery



The Dedication of this Cemetery was withdrawn on the 24 July 1896 without any interments being made (Figure 23).

Figure 23 - Hill End Cemetery - Revocation in 1896 of the Dedication of the Cemetery in 1874²²



SUPPLEMENT

TO THE

NEW SOUTH WALES

Government Gazette.

PUBLISHED BY AUTHORITY.

No. 574.] FRIDAY, 24 JULY. [1896.

NEW SOUTH WALES, } Proclamation by His Excellency The
to wit. } Right Honourable HENRY ROBERT,
(L.S.) } VISCOUNT HAMPDEN, Governor and
HAMPDEN, } Commander-in-Chief of the Colony of
Governor. } New South Wales and its Dependencies.

IN pursuance of the provisions of the Crown Lands Acts, I, HENRY ROBERT, VISCOUNT HAMPDEN, Governor of the Colony of New South Wales aforesaid, with the advice of the Executive Council, do hereby proclaim the following portions to be Crown Lands for the purposes of the Crown Land Acts, and such portions are hereby added to and now form part of the Bull Plain Preferential Occupation Licenses Nos. 152 and 152A, Central Division, subject to the provisions of the such Acts:—

CENTRAL DIVISION.
LAND DISTRICT OF COROWA.

County.	Parish.	Portion	Area.			Cat. No. of Plan.
			S.	F.	P.	
Denison ...	Bull Plain ...	28	60	0	0	D. 315-1,798
Do ...	do ...	29	68	0	0	D. 315 "
Do ...	do ...	89	151	1	20	D. 690 "
Do ...	do ...	90	212	0	0	D. 690 "
Do ...	do ...	91	220	1	0	D. 690 "
Do ...	Denison ...	84	586	0	0	D. 303 "
Do ...	do ...	89	55	3	0	D. 322 "
Do ...	do ...	90	60	0	0	D. 320 "
Do ...	do ...	91	70	1	0	D. 322 "
Do ...	do ...	92	54	0	0	D. 323 "
Do ...	do ...	93	168	0	0	D. 322 "
Do ...	do ...	95	267	2	0	D. 358 "
Do ...	do ...	97	140	1	0	D. 321 "
Do ...	do ...	105	80	0	0	D. 1,135 "
Do ...	do ...	106	40	0	0	D. 1,202 "
Do ...	do ...	114	167	1	0	D. 1,317 "

NOTE.—The above lands are about to be made available for homestead selection. [Occ. 95-5,993]

Given under my Hand and Seal, at Government House, Sydney, this twenty-fourth day of July, in the year of our Lord one thousand eight hundred and ninety-six, and in the sixtieth year of Her Majesty's Reign.

By His Excellency's Command,
J. H. CARRUTHERS.

[476] GOD SAVE THE QUEEN!

NEW SOUTH WALES, } Proclamation by His Excellency The
to wit. } Right Honourable HENRY ROBERT,
(L.S.) } VISCOUNT HAMPDEN, Governor and
HAMPDEN, } Commander-in-Chief of the Colony of
Governor. } New South Wales and its Dependencies.

WHEREAS under the 105th section of the Crown Lands Act of 1884, power is given for the revocation of any dedication of Crown Lands dedicated by the Crown: Now, therefore, I, HENRY ROBERT, VISCOUNT HAMPDEN, as such Governor as aforesaid, with the advice of the Executive Council of the Colony, do hereby declare that all preliminary action in connection with the proposed revocation of the dedication for General Cemetery at Hill End, area 7 acres 2 roods, dedicated 9th June, 1874, and described in the Schedule hereto, has been duly taken; and I do hereby, with such advice as aforesaid, wholly revoke the dedication of the said 7 acres 2 roods of land, and proclaim that the same shall be and is hereby declared to be revoked.

[Ms. 96-3,437 Ind.]

Given under my Hand and Seal, at Government House, Sydney, this twenty-fourth day of July, in the year of our Lord one thousand eight hundred and ninety-six, and in the sixtieth year of Her Majesty's Reign.

By His Excellency's Command,
J. H. CARRUTHERS.

GOD SAVE THE QUEEN!

SCHEDULE REFERRED TO.

Description of 7 acres 2 roods of land, the dedication of which is hereby revoked.

County of Wellington, parish of Carroll, area 7 acres 2 roods: Commencing at a point bearing south 81 degrees 55 minutes east and distant 2 chains 15½ links from the south-western corner of portion 56; and bounded thence by a line east 8 chains; thence by a line south 10 chains 38 links; thence by a line west 8 chains; and thence by a line north 10 chains 38 links, to the point of commencement,—but exclusive of a road 1 chain wide intersecting the above land. Plan catalogued G. 356-1,934. 272]

SYDNEY:

Printed and Published by CHARLES POTTER, Government Printer, Phillip-street, 24th July, 1896.

²² NSWGG No.574, p.5085, dtd 24 July 1896

TAMBAROORA GENERAL CEMETERY - 1859

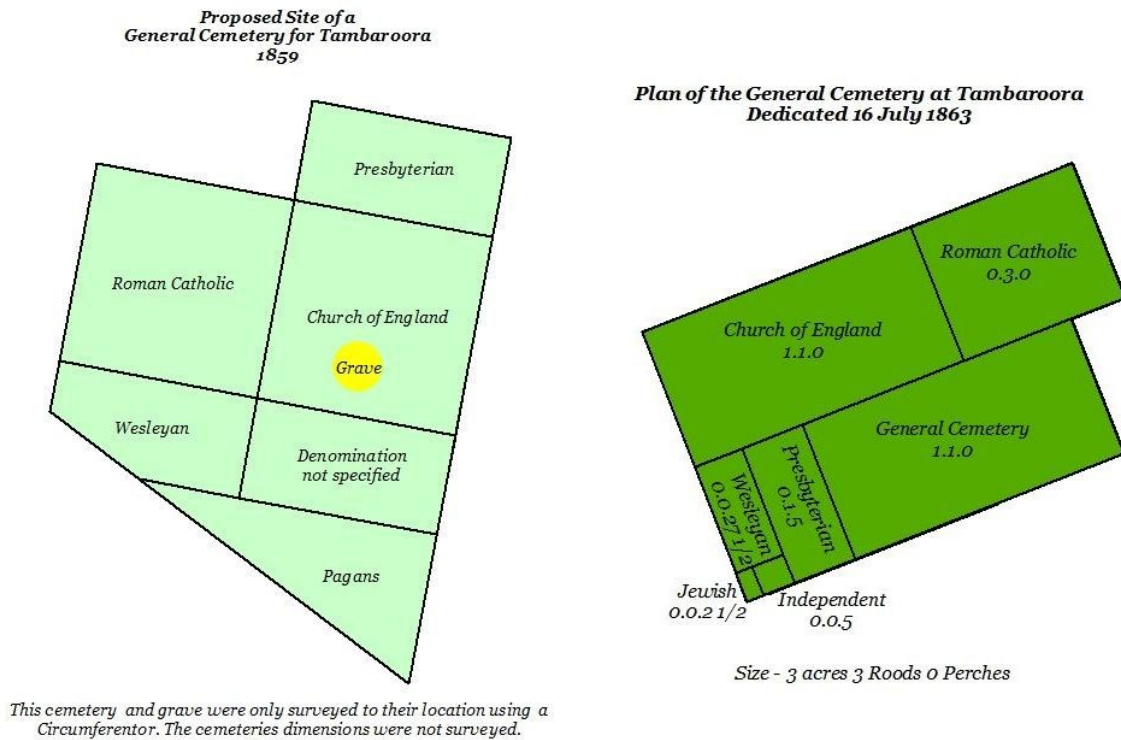
PLEASE NOTE

This Cemetery site is now on private property and as such there is no access to the site. Please respect the owner's privacy.

General Cemetery - Proposed Site - 1859

A proposed site was surveyed by Surveyor J.A.H. Price in mid-1859, its location may have been influenced by the presence of an existing grave located south east of the town which was situated between the two tracks leading to the town from Sofala. The actual Cemetery layout although drawn was not surveyed, only a survey to the site and the grave was undertaken as can be seen below. This Crown Plan²³ was cancelled and replaced by another Crown Plan²⁴ in 1861, (Figure 24).

Figure 24 - TGC 1859 - Layout of Proposed General Cemetery's



This cemetery and grave were only surveyed to their location using a Circumferentor. The cemeteries dimensions were not surveyed.

Image compiled from Crown Plan 741-730, 1859 and 800-730, 1861
Reconstructed using an Autocad program by Warwick P Taylor - 2017

The image below (Figure 25) shows both the surveyed cemeteries, the earlier cemetery surveyed in 1859 is highlighted by the light green colour and partially obscured by the dark green cemetery surveyed in 1861, both show their respective survey trace lines back to the town boundary. The earlier cemetery trace lines follow the escort track back to the junction of the track and the eastern town boundary, the later cemeteries trace lines appear to follow the contour of the land back to the south western corner of Lot 4 Section 18 within the town, there is also a direct trace line from Lot 4 Section 18 to the north west corner of the cemetery. Both measurements of the later cemetery confirm the accuracy of the Surveyors measurements, and those of the diagram below.

The grave mentioned previously was noted on CP 741-730 compiled in 1859, this is the only reference found. The accuracy cannot be determined due to a necessary measurement being omitted from the Crown Plan. Its position has been determined by using the scale indicated on the CP, this can only be used for an approximate position from point seven to the change of direction to the grave marked with

²³ Crown Plan, Proposed General Cemetery, 741-800, 1859, NSW Land Registry Services

²⁴ Crown Plan, Tambaroora General Cemetery, 800-730, 1861, NSW Land Registry Services

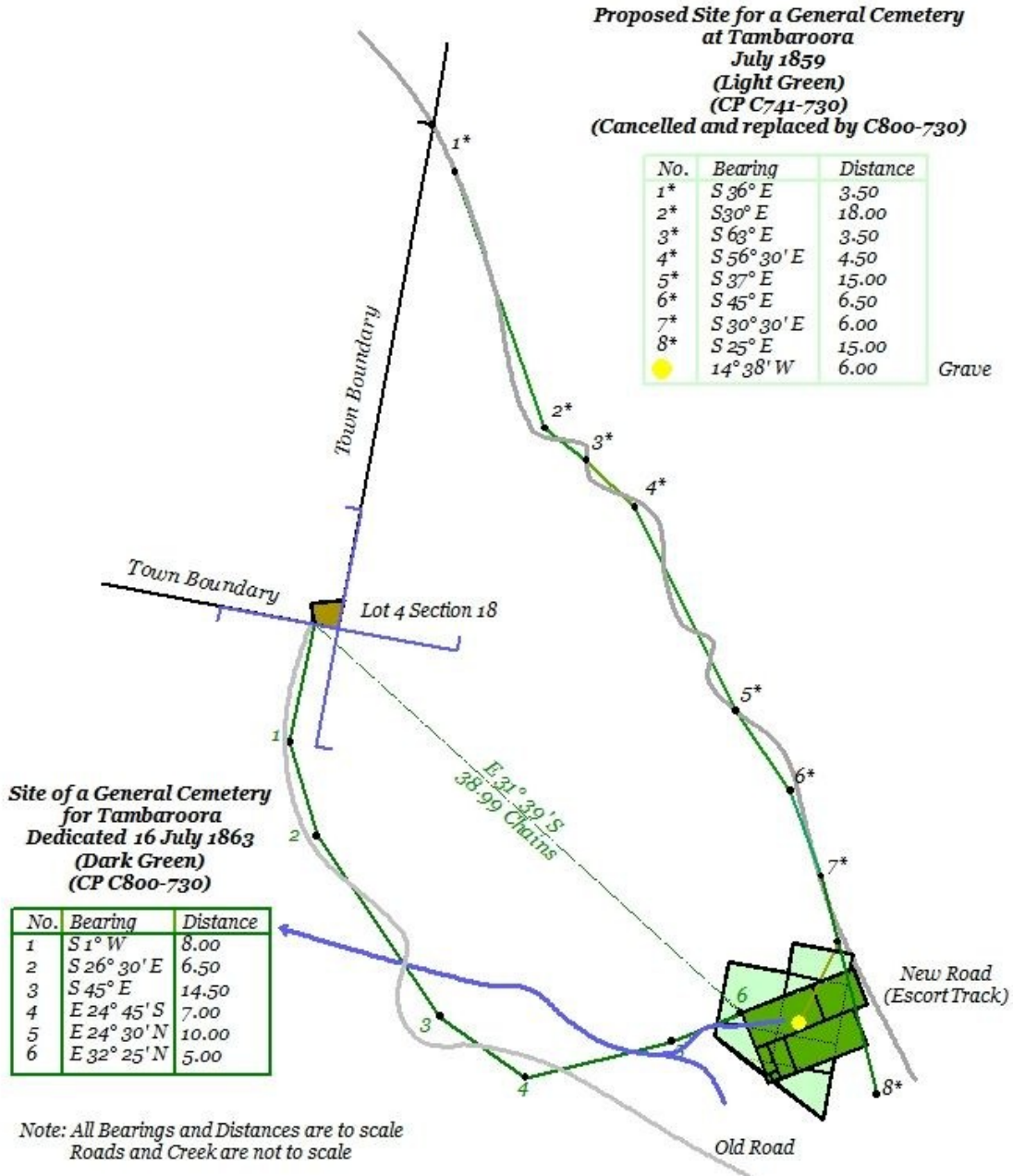
CEMETERIES OF THE TAMBAROORA

Saturday, 11 April 2026

© Warwick P Taylor 2026 - tambaroora.com

the yellow dot. At the very least it is known that one grave exists within the cemetery, this maybe more coincidence than deliberate, when the first survey was undertaken for a proposed cemetery this grave was in situ so in all probability the grave preceded the survey²³.

Figure 25 - TGC 1859 - Survey of the Cemetery's Location from the Town



Measurements for both Cemeteries

All angular measurements have been made using magnetic north and NOT true north. Magnetic Variation used is 10.6°

The roads and creek/gully paths are approximations as they were drawn freehand on the CP's Image compiled from Crown Plan 741-730 and 800-730

Reconstructed by Warwick P Taylor using an Autocad program - 2017

This Cemetery is mentioned in a table in the NSW Gazette of 1863 (Figure 26)

CEMETERIES OF THE TAMBAROORA

Saturday, 11 April 2026

© Warwick P Taylor 2026 - tambaroora.com

Figure 26 - TGC 1859 - NSWGG Lands Dedicated for Public Use

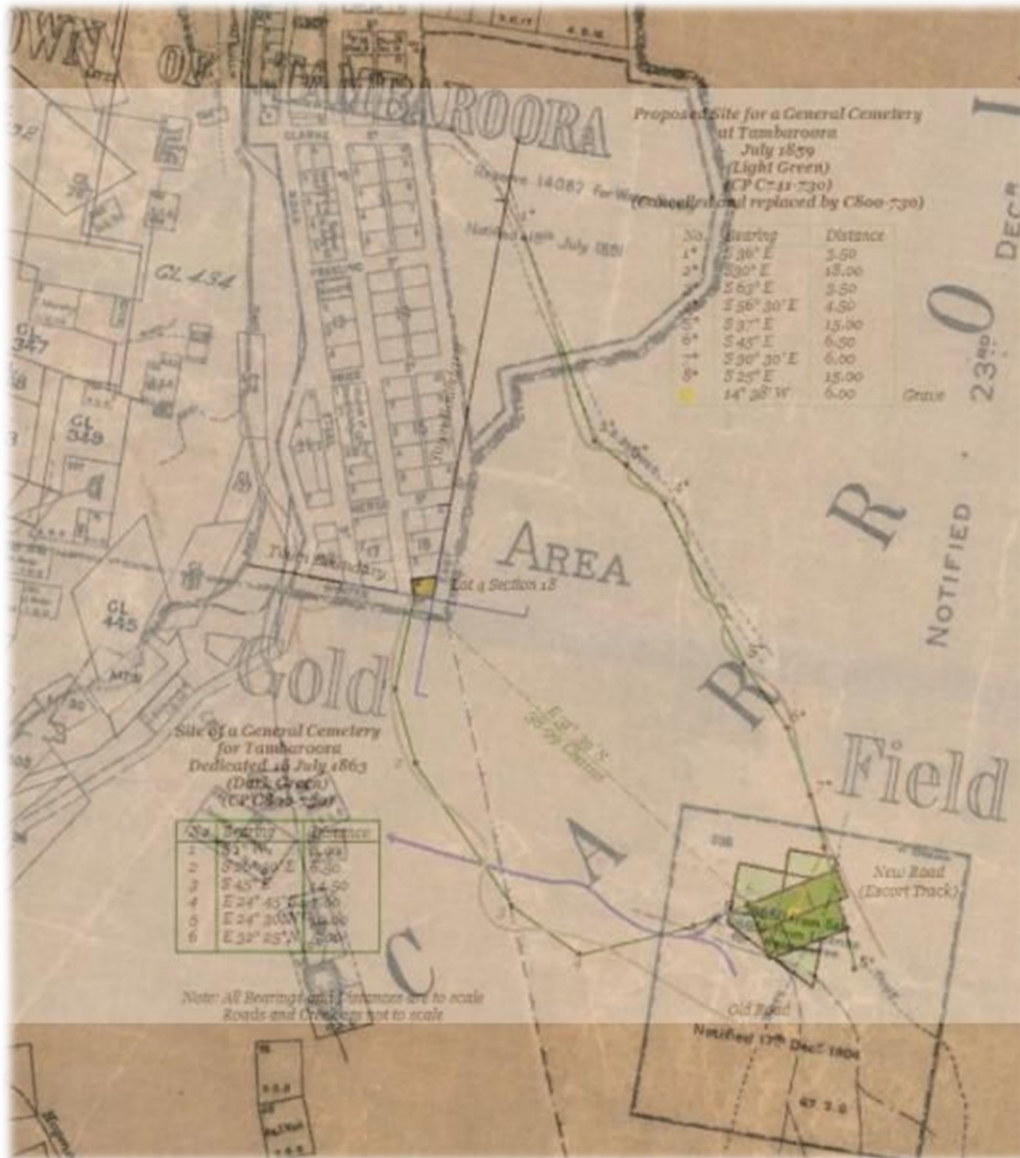
COUNTY.	PLAC.	ALLOTMENT.	SECTION.	LOCALITY.	AREA.	TO WHAT PURPOSE APPROPRIATED.
Tambaroora	Wellington	1, 2, 3	16	2 0 0	Church of England Church, School, and Parsonage.
Do	do	2, 3, 4, and 5	12	About $\frac{1}{4}$ of a mile south-easterly from the town of Tambaroora.	2 1 8	National School.
Do	do	3 3 0	General Cemetery.

Image Courtesy of TROVE, National Library of Australia

the Cemetery according to the Gazette was to be located approximately $\frac{3}{4}$ mile south easterly from the town covering an area of 3 acres 3 roods 0 perches. As stated in the Gazette the distance was approximate, Google Earth Pro shows it as being only $\frac{1}{2}$ a mile as does the early charting maps, the size of the cemetery is identical to that given in the Gazette, 3 acres 3 roods 0 perches.

Figure 27 below uses Figure 25 above overlaid on the 1922 Hill End and Tambaroora Map using G, the cemetery is located on what was later to become Lot 208 in 1904 and Reserved for a Racecourse for the Hill End and Tambaroora Race Club.

Figure 27 - TGC 1859 - Surveyors Measurements overlaid on 1922 Hill End and Tambaroora Map



Compiled using Google Earth Pro by Warwick P Taylor – 2017

Map Courtesy of DIGS, NSW Resources and Trade

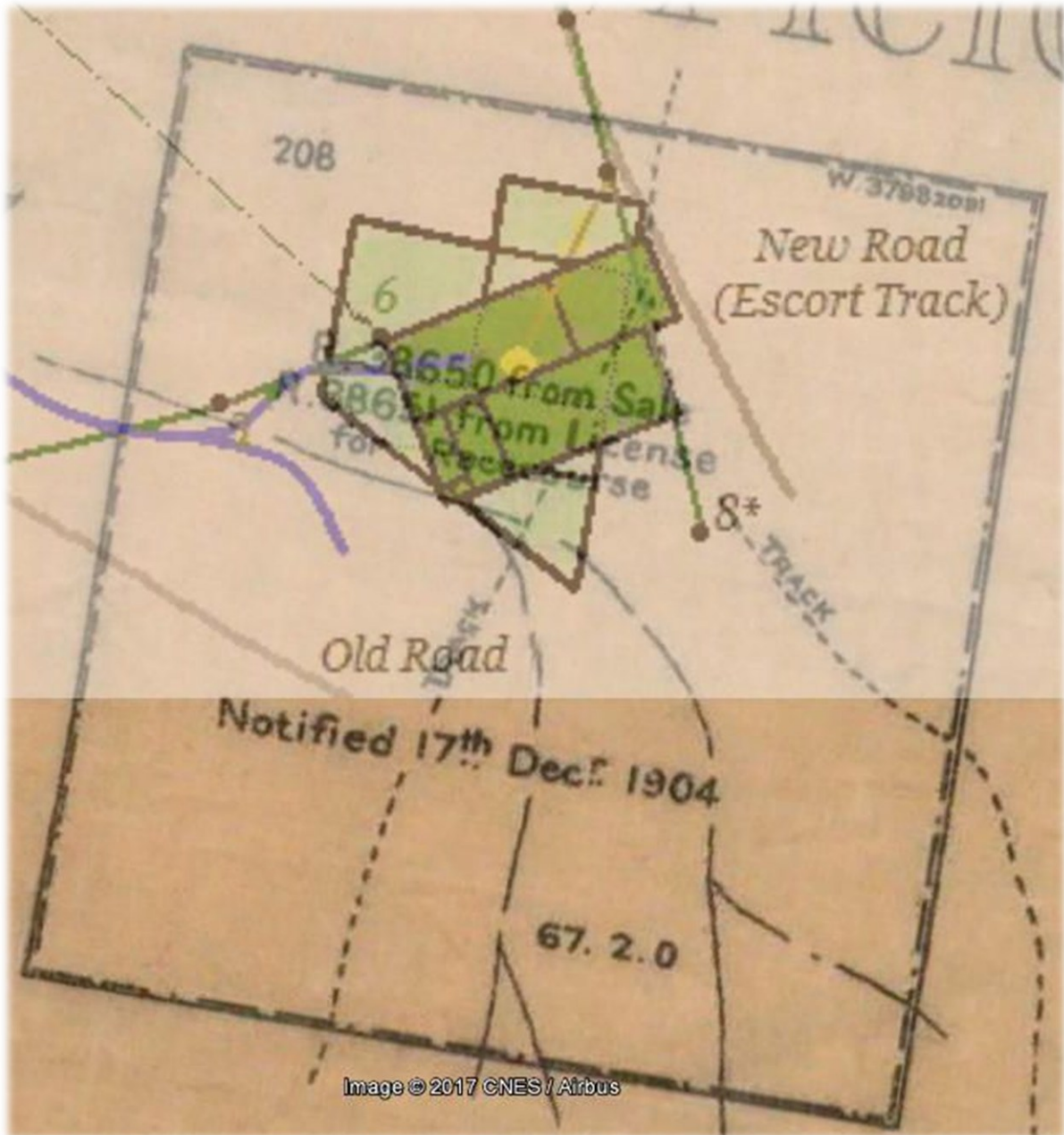
CEMETERIES OF THE TAMBAROORA

Saturday, 11 April 2026

© Warwick P Taylor 2026 - tambaroora.com

Figure 28 shows the position of the Cemetery in relation to Lot 208 and the racecourse, and Figure 29 shows the position of the Cemetery overlaid on satellite imagery.

Figure 28 - TGC 1859 - Lot 208 with the Cemetery (dark green shading) located within.



Extracted from the 1922 Hill End and Tambaroora Map
Compiled using Google Earth Pro by Warwick P Taylor - 2017

Map Courtesy of DIGS, NSW Resources and Trade

CEMETERIES OF THE TAMBAROORA

Saturday, 11 April 2026

© Warwick P Taylor 2026 - tambaroora.com

Figure 29 - TGC 1859 - Satellite Imagery showing the Cemetery overlaid on the actual ground.



Created from Google Earth Pro by Warwick P Taylor – 2017

PLEASE NOTE

This Cemetery site is now on private property and as such there is no access to the site.
Please respect the owners privacy.

TAMBAROORA GENERAL CEMETERY - 1898**Status**

Lots - 7319 (Plantation) and 7320 (Cemetery)

DP - 1159083

Title - NOT in the NSW LRS

Situation - Crown Land

The survey plan of this cemetery (386.3090) notes that it was to be dedicated under the 104th Section of the Crown Lands Act of 1884. The site was surveyed in Jul 1897 and approved in Dec 1897, the land was withdrawn from the Hill End and Tambaroora Temporary Commonage on the 19th Feb 1898²⁵ (Figure 30) and was dedicated on the 8th Oct 1898²⁶.

Figure 30 - TGC 1898 - Withdrawal of Land from the Hill End and Tambaroora Temporary Commonage

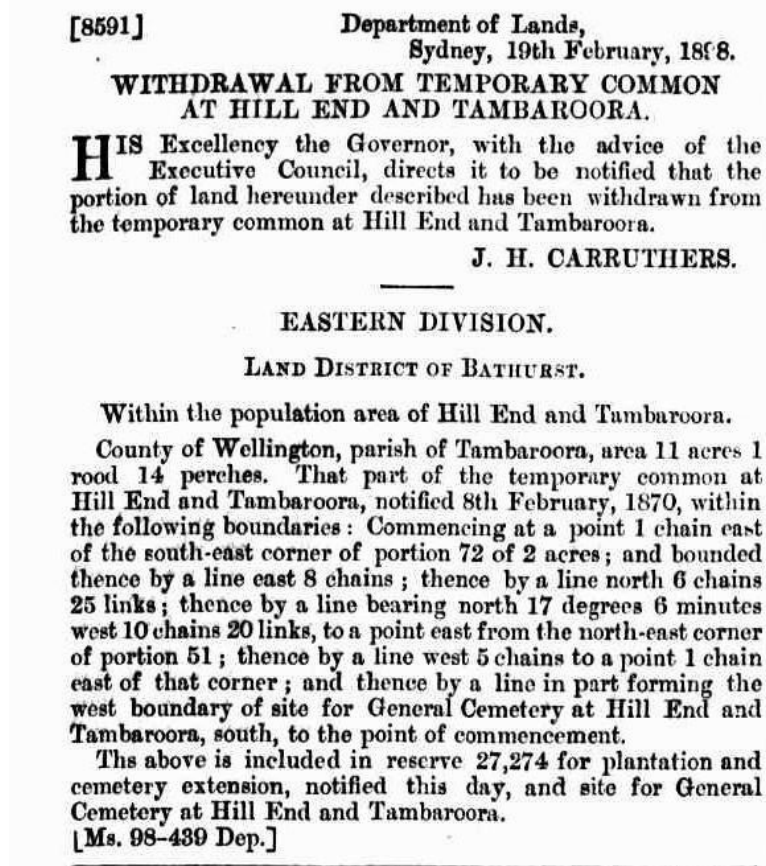


Image Courtesy of TROVE, National Library of Australia

As an adjunct to the general cemetery, land was also reserved from sale for a plantation and extension to the cemetery²⁵.

The image (Figure 31) below shows the actual cemetery without the addition of the plantation, the water race shown in the bottom right of the image is still in existence and easily identified today.

²⁵ NSW Government Gazette, No.147, p.1335, dtd 19 Feb 1898

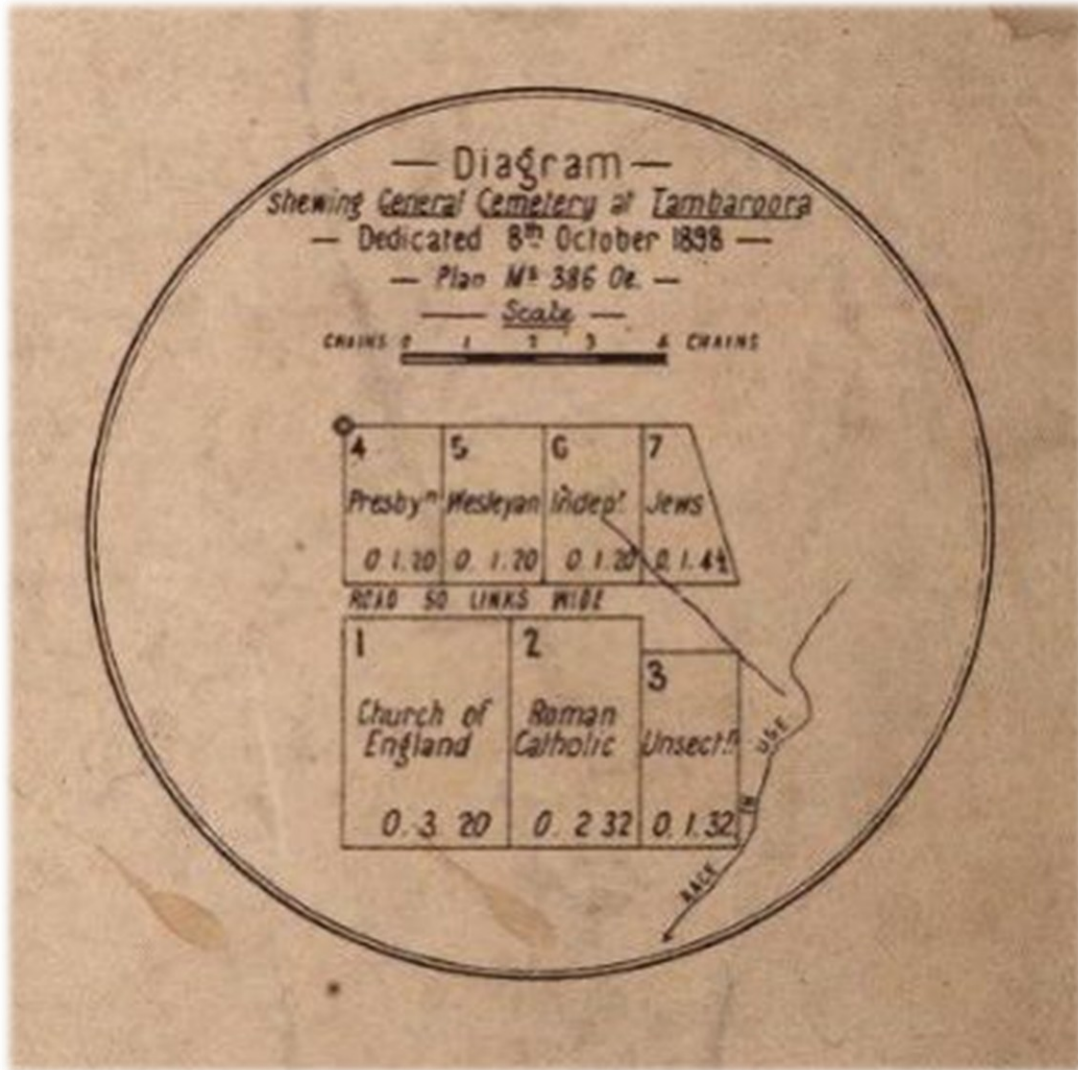
²⁶ Parish Map of Tambaroora, 1899

CEMETERIES OF THE TAMBAROORA

Saturday, 11 April 2026

© Warwick P Taylor 2026 - tambaroora.com

Figure 31 - TGC 1898 - Layout of the Cemetery



Parish Map of Tambaroora 1899

Map Courtesy of NSW Land Registry Services

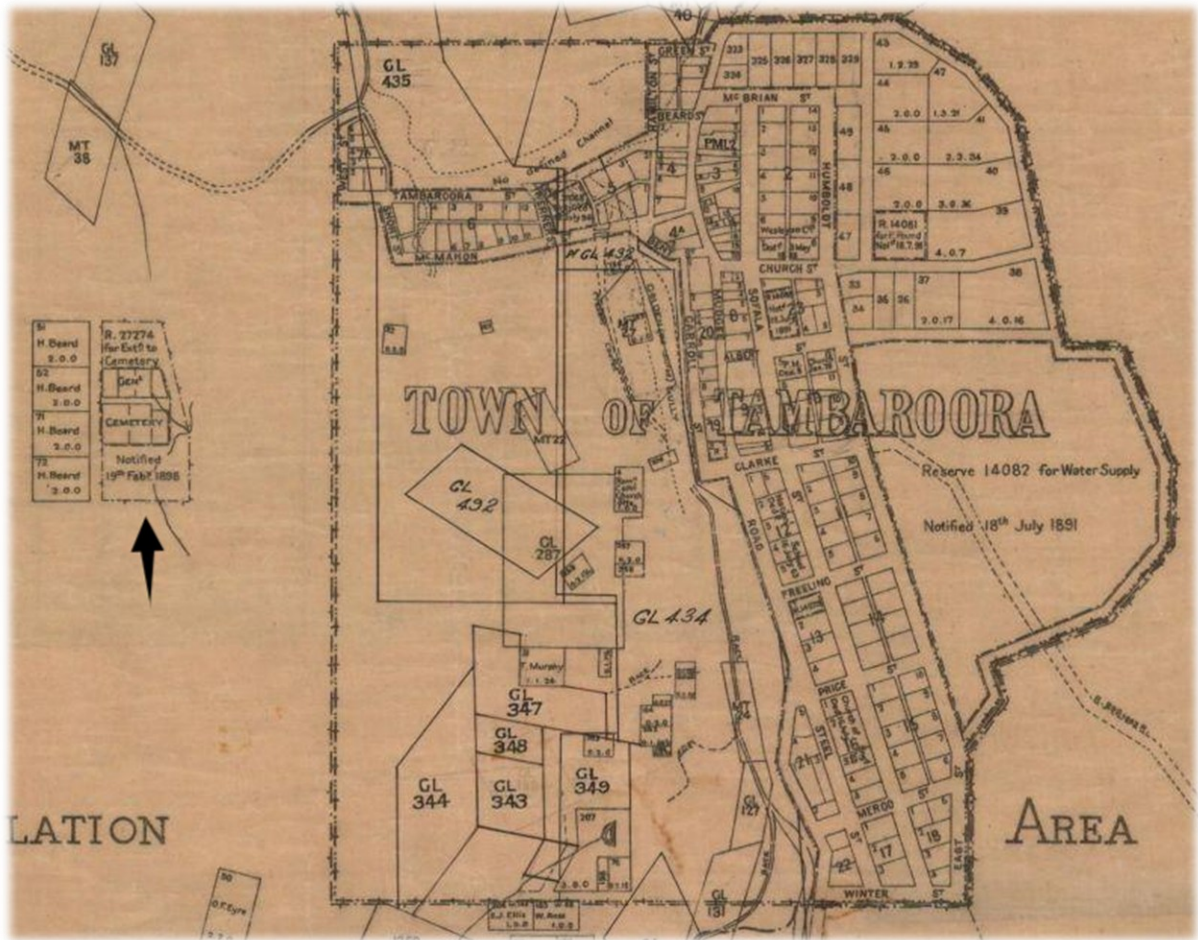
CEMETERIES OF THE TAMBAROORA

Saturday, 11 April 2026

© Warwick P Taylor 2026 - tambaroora.com

Layout and location of the general cemetery (Figure 32) in the western area of Tambaroora (indicated by the black arrow)

Figure 32 - TGC 1898 - Location of the General Cemetery



Map Courtesy of NSW Land Registry Services

The proposed Appropriations for the denominations were:
Church of England - 3 roods 20 perches
Roman Catholic - 2 roods 32 perches
Unsectarian - 1 rood 32 perches
Presbyterian - 1 rood 20 perches
Wesleyan - 1 rood 20 perches
Independent - 1 rood 20 perches
Jews - 1 rood 4 1/2 perches

Trustees were appointed in 1898 for both the Wesleyan²⁷ (Figure 33) and the Church of England²⁸ (Figure 34) portions of the General Cemetery.

Figure 33 - TGC 1898 - Wesleyan Trustees Appointed

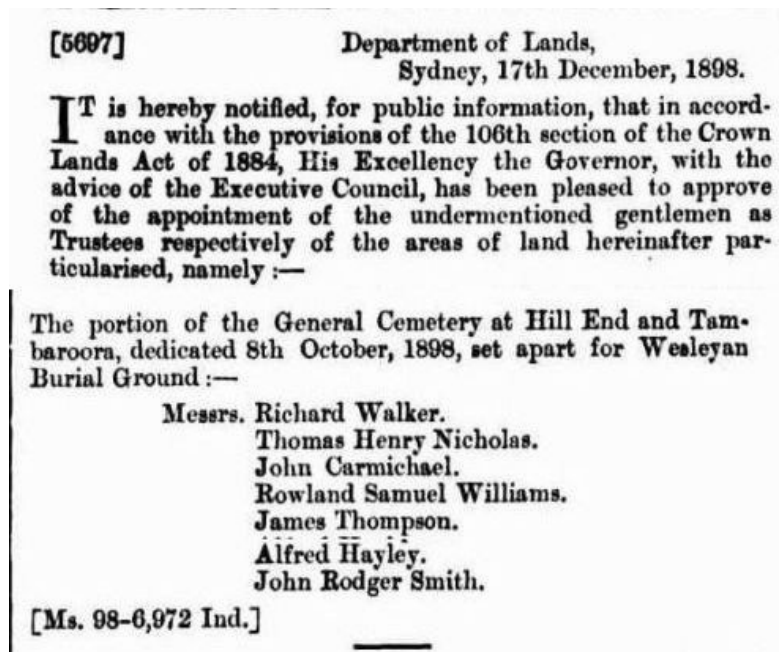


Image Courtesy of TROVE, National Library of Australia

Figure 34 - TGC 1898 - Church of England Trustees Appointed

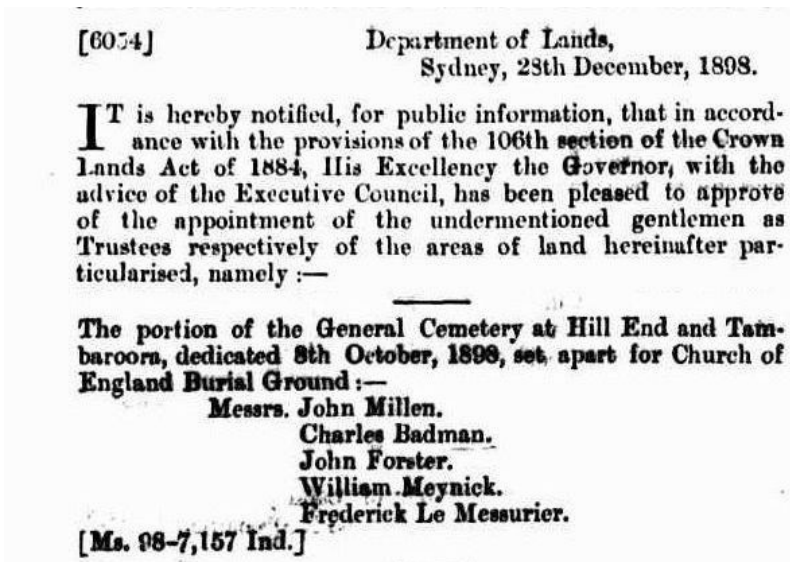


Image Courtesy of TROVE, National Library of Australia

It is worth noting that 30 years after the appointment of Frederick Le Meaurier as a Trustee of the Church of England portion of the General Cemetery it was gazetted that he was removed from the list

²⁷ NSW Government Gazette, No.1079, p.9777, dtd 17 Dec 1898 [5697]

²⁸ NSW Government Gazette, No.1111, p.10022, dtd 28 Dec 1898 [6074]

CEMETERIES OF THE TAMBAROORA

Saturday, 11 April 2026

© Warwick P Taylor 2026 - tambaroora.com

of Trustee's.

In 1929 this General Cemetery was inadvertently "fixed" by a Corporate Body from Bathurst unaware that it was the intention to fix the Cemetery located on Steele Street which was formerly the Church of England's Graveyard when the first church was located on the site from 1854 to 1871.

The Steele Street Cemetery had always been referred to as the Church of England Cemetery hence the error. This and the non-denominational burials made in the past in the Steele Street Cemetery eventually led to approaches being made to have the Steele Street Cemetery made into the General Cemetery. The change from Church of England Cemetery to the Tambaroora General Cemetery occurred in 1951.

Full details are in the Tambaroora General Cemetery 1951 Notes

The End - For Now!

TAMBAROORA GENERAL CEMETERY - 1951

(CHURCH OF ENGLAND CHURCH GRAVEYARD– 1854)

The Current Cemetery

This cemetery has been mistakenly referred to as the Hill End Cemetery in recent years, at no time has it ever been officially noted as such, there was a Hill End Cemetery in 1874 located in the vicinity of Hill End. The Tambaroora General Cemetery is located within the town boundary of Tambaroora. A lack of local history knowledge has seen its name misquoted.

The following is based on information taken from Government Gazettes, Maps, Crown Survey Plans, letter's and newspapers of the day.

Figure 35 - Church of England Church and Graveyard



*First Bark C of E Church within Lot 2 Section 16, with graves within the fence line
Image courtesy of the Holtermann Collection, Mitchell Library, State Library of NSW*

Status

Lots - 1, 2, 3 and 6 in Section 16 Town of Tambaroora

DP - 758950

Title - Not in NSWLRS

Situation - Crown Land

To understand the location of the Church of England (C of E) graveyard and eventual current general cemetery we must first look at the establishment of the C of E church in Tambaroora.

Erection of Church - 1854

October 1852 saw the appointment and arrival of the Reverend E.B. Proctor to Tambaroura (

Figure 36), on the evening of the 19th October after evening service a meeting²⁹ was held to formulate a plan for the erection of a church to be also used as a school during the week. At this meeting a committee was formed with the intent of procuring subscriptions towards the erection of the church building.

Figure 36 - C of E Cemetery - Meeting of Community Members to plan for the erection of a Church

TAMBAROORA.
OCTOBER 18.—We are happy to say that this long neglected district has been visited by a clergyman, the Rev. E. B. Proctor, whose ministrations we were blessed with yesterday (19th Sunday after Trinity.) This gentleman is stationed at the Meroo, and but lately has been appointed to Tambaroura, in consequence of which two services were performed in a spare room at the Commissioner's quarters, temporarily fitted up for the occasion. The shortness of the notice, and the absence of a bell to denote the hour of assembling, probably caused a deficiency in the number of persons attending, but notwithstanding, twenty persons in the morning and thirty-six in the afternoon, joined in the services of our church most attentively. There was also a child baptized during the morning service, a woman returned thanks after childbirth, and the presence of the clergyman was availed of by a sick person, who we trust was benefitted by his opportune visit. After the evening service a meeting was held, to devise means for erecting a church, to be used during the week for a school, which proposal gave great satisfaction to the inhabitants; Mr. Assistant-Commissioner MILLER in the Chair, when the following resolutions were passed unanimously.
 1st Resolution: Proposed by Mr. M'DONELL, seconded by Mr. SHERIDAN—
 That this meeting do express its gratitude to the Lord Bishop of Sydney, and to the Society for the Propagation of the Gospel in Foreign Parts, for their sympathy in the necessities of this district, evinced by sending a clergyman to administer to the spiritual wants of the inhabitants of Tambaroura.

(continued over)

²⁹ Newspaper, Sydney Morning Herald, p.3, dtd 23 Oct 1852

2nd Resolution. Proposed by Mr. S. B. MARSHALL, seconded by Mr. Sub-Commissioner BUCHANAN -

That in order the more fully to reap the benefit of the services of the clergyman so sent amongst them, this meeting feels it their duty to erect a building suitable for Divine Worship, to be used as often as the clergyman can officiate here, and for a school in his absence.

3rd Resolution.—Proposed by Mr. SHERIDAN, and seconded by Mr. DOWSE—

That in order to carry out the above resolution, a Committee be appointed, for the purpose of procuring subscriptions, to consist of Mr. Assistant-Commissioner Miller, chairman; Mr. Sub-Commissioner Buchanan, Mr. Sheridan, Mr. Marshall, Mr. Dowse, Mr. M'Donell, Mr. Phillips, with power to add to their number.

The usual vote of thanks to the Chairman was duly passed, and before the meeting separated upwards of £15 was subscribed in the room. It is intended to have service performed here once a month, and although, considering the extent of the district, we can hardly expect more at present, yet we quite sympathise with the clergyman in the hope that other arrangements may be hereafter entered into to afford us more frequent opportunities of celebrating Divine service,

Image Courtesy of TROVE, National Library of Australia

In October 1852 a deputation of C of E residents from Tambaroora requested to have land allocated for a church and school to be sited behind the Barracks (Commissioners Camp), also requested was the piece of land used as the burial ground which at that time had 10 interments. To date this burial ground location has not been ascertained.

1854 saw a list of appropriations of land for religious purposes authorised, included was land allocated to the C of E for a church of 1 acre, a school of 2 roods and a parsonage of 2 roods.

Land was surveyed in late 1854 early 1855 by Surveyor Bairdson and transmitted to the Surveyor General in February 1855. Bairdson's plan noted a "[Plan of three portions of land at Tambaroora, as sites for a Church of England, School and Parsonage](#)"³⁰, the survey was not undertaken behind the barracks but to the south of the main township in what was to become the current general cemetery. Bairdson's plan did not reflect the later surveys done in 1859 by Price although it was still located at the same site, the difference being the layout of the three Lots.

By the time the survey was undertaken the church had been officially opened in July 1854³¹, (Figure 37), the realization that the Tambaroora Goldfield was bigger than first thought may have seen those keen to see the establishment of the church and school question the suitability of the site behind the Barracks and revised the location requested and moved to a more stable area south of the main town area. Factors contributing to the move may have included:

³⁰ Crown Survey Plan, Church of England Appropriated Lands, 551-730, 1855, NSW Land Registry Services

³¹ Newspaper, Bathurst Free Press and Mining Journal, p.2, dtd 8 Jul 1854

- the land behind the barracks otherwise known as the commissioner's camp was also the area that one of the first applications for the registration of a quartz vein was made.
- The area was also known as Samuels field or flat which could indicate that it was used to depasture stock prior to the local discovery of gold on the site. William Cummings had a Stockyard on this field 25 years beforehand.
- It was also a site re-visited on numerous occasions by miners with new discoveries being made.

Figure 37 - C of E Cemetery - Church Officially Opened

TAMBAROORA.
On Sunday last the church here was opened
 by the Rev. Mr Palmer to whom great credit is
 due. Since we were placed under her spiritual
 charge some four months since. Within that
 time nearly if not upwards of £200 has been sub-
 scribed for the building of the church, school
 room and residence of the schoolmaster which are
 now complete and paid for. A sum also of up-
 wards of £150, has been guaranteed towards the
 annual stipend of a resident clergyman, and if
 the Government will give the same amount no
 doubt, but we shall shortly enjoy the regular
 performance of the services of the church here.
 I may add that the Rev. Mr. Palmer has been
 most cordially and effectually supported in his
 endeavours here by our commissioner Mr
 Broughton, and our churchwardens Dr. Cutting
 and Mr. Stack. I have forwarded you these par-
 ticulars in the hope that they will help to refute
 the too common opinion that the diggers are a
 set of ruffians, caring for nothing but grog and
 dissipation.

Image Courtesy of TROVE, National Library of Australia

The crown plan of the Colonial Gold Company's and W.C. Cole's Quartz Claims and Crushing Works near Tambaroura dated 1855³² shows the location of the church at the southern end of the town on the track to Sofala/Bathurst³³. A more detailed crown plan by Bairdson of the 3 portions that were allocated shows the layout of the church, school and parsonage³⁴. Surveyor Prices survey in 1859 shows the three allocated Lots in a different format than that surveyed by Bairdson in 1854/55.

In 1859 surveyor Price was issued instructions to undertake a survey of the layout of the town in preparation of it officially becoming a town named Tambaroora. One of the surveyors undertakings was to try and bring some sort of uniformity to the layout of the town from what was at the time a haphazard collection of buildings and roads. These would have included the C of E church and school buildings which had been in existence since 1854. Once his task had been completed notification appeared in the NSW Government Gazette of 1863, for Lots 1, 2 and 3 of Section 16 for the use of the C of E³⁵.

The Graveyard / Cemetery - 1854

³² Crown Survey Plan, Plan of the Colonial Gold Company and W.C. Coles Quartz Claims, G6.1481, NSW Land Registry Services

³³ Crown Survey Plan, Church of England Appropriated Lands, 6-1418, 1855, NSW Land Registry Services

³⁴ Crown Survey Plan, Church of England Appropriated Lands, 551-730, 1855, NSW Land Registry Services

³⁵ Crown Survey Plan, Church of England, Church, School & Pasonage, 760-730, 1860, NSW Land Registry Services

CEMETERIES OF THE TAMBAROORA

Saturday, 11 April 2026

© Warwick P Taylor 2026 - tambaroora.com

The cemetery had its beginnings as the C of E church yard created around the same time as the opening of the church in 1854. No area was officially allocated for a C of E cemetery but most likely it followed the long-held tradition of including a church graveyard within the confines of the church perimeter, not long after the church opened interments started to appear.

The image below (

Figure 38) shows Section 16 on the 1859 town map and the land occupied by the C of E, Lot 1 was allocated to the school, Lot 2 for the church and Lot 3 for the parsonage. The school can be seen annotated in Lot 1, the church on Lot 2 can be seen surrounded by a fence, this was the original position of the church. This has been confirmed by images of graves located within the vicinity of the church.

Figure 38 - C of E Cemetery - Position of the Church and Yard in Section 16 as shown on the 1859 Town Plan



Position of the Bark Church and Fence Line within Lot 2 Section 16 showing the layout of the School on Lot 1 of 2 roods, the Church on Lot 2 of 1 acre and the Parsonage on Lot 3 of 2 roods. Plan Courtesy of the State Records of NSW

Eventually the graveyard occupied the area within the fence surrounding the church. The fence line shown below in the plan (Figure 39), is not indicative of the current fence line. The fence line may not

have changed to conform with the surveyed parcel of land until after the C of E relocated their church in 1871 and the graveyard enlarged to accommodate the non-denominational interments.

The aerial images (

Figure 39) and (Figure 40) below show the alignment of the graves prior to 1871-74 when the grave yard became the unofficial general cemetery and expanded and re-aligned to reflect the surveyed boundaries made by surveyor Price in 1859.

Figure 39 - C of E Cemetery - Layout of the Church Yard in relation to Section 16



The image above shows the original position of the Church and fence line in relation to Lot 2 Section 16 which was the surveyed site noted in the 1863 Government Gazette.

Drone Imagery by Kel Taylor and Overlay by Warwick P Taylor

The image above represents where the original church and graveyard were located in relation to the current cemetery. The largest red box is the outline of Lot 2 Section 16, Lot 1 was located to the north of Lot 2, Lot 3 to the south of Lot 2 was gazetted as the parsonage. The red dashed line box and mimic'd by the solid red line box is the outline of the original fence line. The smaller red box within the fence line is the position of the bark C of E church, this remained the size of the cemetery up until at least 1872-73 when the Holtermann collection images at the top of the page were taken.

Figure 40 - C of E Cemetery - Drone Image showing site of the Church



An aerial image of the general cemetery with an insert of the position of the original church graveyard in relation to the current cemetery. The alignment of the graves in the church graveyard differs from those of the later period when the graveyard became an all denominational cemetery circa 1874. The alignment of some graves within the earlier C of E graveyard are post 1872-73. This can be seen where the bark church was located, all graves within that area are post-dated 1874.

1871 saw the church building re-locate to its new site at Lot 4 and 5 Section 2, the graveyard remained at its present location and eventually took on the roll as the area's unofficial general cemetery circa 1874. Trustee's were appointed, Joseph James WALPOLE, Thomas Sheridan COOPER, Thomas PATEN, John McCULLUM and George DEWDNEY for the C of E portion of the general cemetery, interestingly this coincided with the formation and tabling of the by-laws in parliament of the Hill End Municipal Council who may have assumed responsibility for the cemetery.

The decision to make it the general cemetery must have been a local one as the Bathurst Diocese were not aware of the change nor were there entries in the Government Gazettes to reflect the change from C of E dedicated land to that of a general cemetery. These changes did not take effect until 1951 when the cemetery was officially recognised.

James CHARTERS was noted in 1876 as being the Sexton for the church and at the time was living at Lot 1 Section 21 which he had purchased in 1865, the Lot was located on the other side of Steele Street across from the cemetery^{36,37}.

Even though the land had been occupied by the C of E since 1854 it was not granted to the "United Church of England and Ireland" and its Trustee's until 1884^{38,39,40}, the land usage was still noted as being for a school, church and parsonage, the same as for the 1863 NSW Government Gazette, but by then the church had already moved to its new location so in effect the grants were already obsolete

³⁶ Grevilles Post Office Directory, 1872, Tambaroora

³⁷ Grevilles Post Office Directory, 1875-76, Tambaroora

³⁸ Grant, United Church of England and Ireland, No.5, Lot 1 Section 16 Volume 697, Folio 206, 21 Jan 1884, NSW Land Registry Services

³⁹ Grant, United Church of England and Ireland, No.1, Lot 2 Section 16 Volume 697, Folio 207, 21 Jan 1884, NSW Land Registry Services

⁴⁰ Grant, United Church of England and Ireland, No.3, Lot 3 Section 16 Volume 697, Folio 208, 21 Jan 1884, NSW Land Registry Services

when issued.

The first Trustee's documented and appointed for these Grants were: Joseph James WALPOLE, Thomas PATEN, Samuel BADMAN, Herbert James PATEN, and John LAWLER^{38,39,40}.

Cleaning of the Cemetery – A Community Effort - 1917

After years of neglect the cemetery received some well-deserved tender loving care, community members rallied to the task and in 1917 efforts were made to return the cemetery to its former state (Figure 41).

Figure 41 - C of E Cemetery - Cleaning of the Cemetery

Hill End and Tambaroora Cemetery.—Saturday evening last saw 23 ladies and gentlemen at the cemetery, the object being to continue the work began some weeks ago. A considerable amount of work was done by the people assembled, and graves that have received no attention for 20 years were put in order. It is to be hoped the work will be continued to a successful end. When we read on the tombstones of old pioneers who have been buried for half a century, it seems a pity to see these graves neglected for over 20 years, and the clearing up will go to show there are some amongst the present generation who have not quite forgotten those gone before. Mr. Duncan Marshall has taken a prominent part in this matter, and sends his large van and horses round the town to gather up the voluntary workers, who are conveyed to the cemetery and back.

Image Courtesy of National Library of Australia - TROVE

Discovery that the Cemetery was not a Dedicated Cemetery – 1929

In 1929 a corporate trust from Bathurst undertook to rejuvenate the cemetery, it was not until after this activity that it was realised that the Trust had inadvertently cleaned the wrong cemetery, they had cleaned the Tambaroora general cemetery in the western part of Tambaroora which had been surveyed and dedicated in 1898. When this error had been realised representations were made to religious and political authorities over the cemetery's management and non-denominational burials. One of which saw a delegation from Tambaroora and Hill End approach the Bishop of Bathurst regarding the ongoing management of the Cemetery⁴¹ (Figure 42), it was at this meeting that it was

⁴¹ Newspaper, Mudgee Guardian and North-Western Representative, p.20, dtd 6 Jun 1929

found that the cemetery was not in fact a dedicated cemetery of any denomination, having never being gazetted for that purpose.

Figure 42 - C of E Cemetery - Ongoing Management of the Cemetery

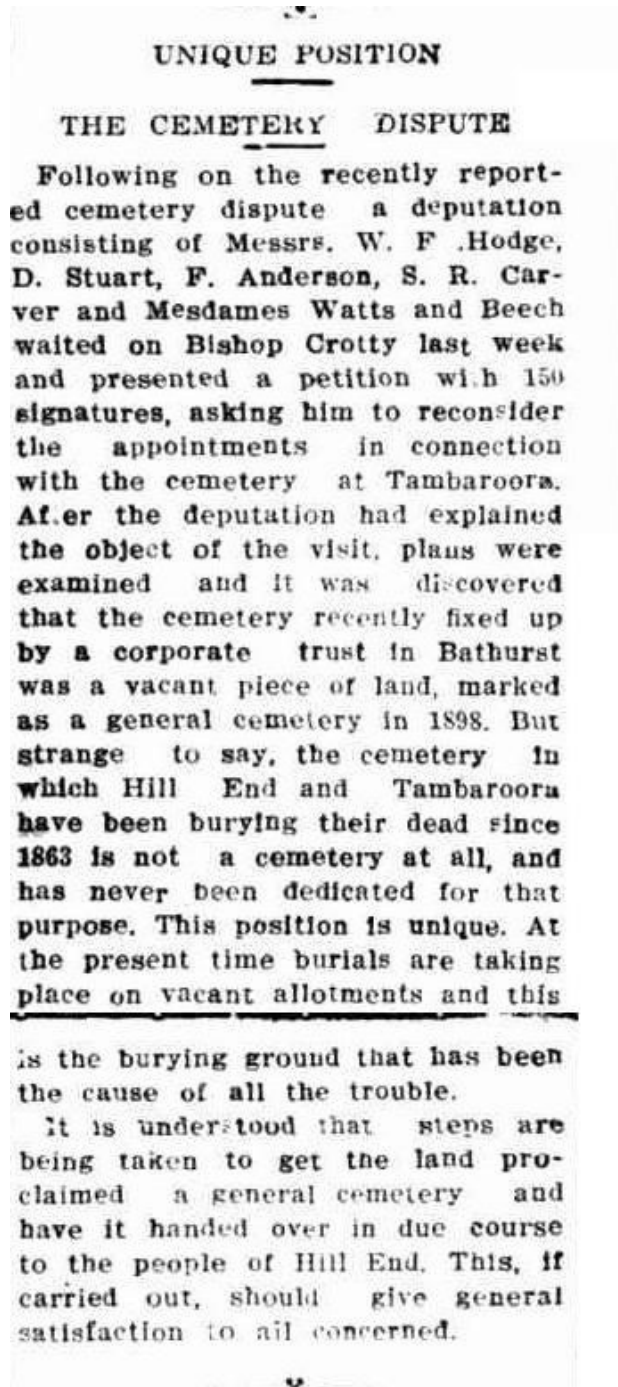


Image Courtesy of TROVE, National Library of Australia

The Bishop of Bathurst stated that other denominations would continue to be interred in the cemetery but it was to be understood that the church still had control of the land⁴², (Figure 43).

⁴² Newspaper, Mudgee Guardian and North-Western Representative, p.10, dtd 26 Feb 1930

Figure 43 - C of E Cemetery - Temporary Control of the C of E Cemetery

VEXED QUESTION

TAMBAROORA CEMETERY

QUESTION OF CONTROL

Efforts which have been made to clear up matters in connection with the control of the Tambaroora cemetery will, it is hoped, result in a satisfactory settlement being arrived at.

Canon Holmes of Bathurst in a letter to the Rector of Hill End (Rev. R. W. Ellis) states that the utmost will be done to settle the matter, provided that the people interested are willing to recognise the existing authority of the Church of England Property Trust over the cemetery for the time being. If the people of Hill End are willing to apply to either to the trust or the rector for permits to bury, notices will not be necessary at cemetery. The church authorities see no reason why such applications should be refused.

When the authority asked for has been acknowledged it is the intention

to surrender the present trust and ask the Lands Office to create a general trust for the cemetery and also to dedicate a separate area for the Church of England

There is no desire on the part of the Church of England to retain trusteeship of a cemetery which has been a general burying place for all denominations, and concerning which there appears to be

The Canon concludes that it will be a matter of six months before the Lands Office will be able to send a surveyor to Hill End. In the meantime the trust will continue to assert its authority in the matter of the cemetery.

Image Courtesy of TROVE, National Library of Australia

Moves to Gain Control of the Management of the Cemetery - 1944

In 1944 at the instigation of Mr. Harry Walpole of Hill End an exchange of correspondence between Members of State Parliament sought to put to an end to the ongoing issue of control of the Cemetery being used by the residents of both Tambaroora and Hill End. A letter from the Minister of Lands Mr. J.M. Tully to the Minister of Conservation the Hon. W.F. Dunn M.L.A., reads:

“24 January 1945

Dear M. Dunn,

With reference to your personal representations on behalf of Mr. Harry Walpole of Hill End regarding the Cemetery at Hill End and Tambaroora which it is desired to have resumed and proclaimed as a General Cemetery to be placed under the control of chosen trustees, I shall have inquiries made into the matter and let you have further advice. Yours Faithfully,

(J.M. Tully)

Minister of Lands”⁴³

Again, on the 14 Feb 1945 the Minister of Lands Mr. Tully wrote to the Minister of Conservation Mr. Dunn:

“14 Feb 1945

Dear Mr. Dunn,

With reference to your personal representations to me on behalf of Mr. Harry Walpole of Hill End, relative to his request that the area used as a general burial ground at Hill End and Tambaroora be formally established as a general cemetery, I desire to inform you that the area referred to is allotment 1, 2 and 3 of section 16, Town of Tambaroora, which were dedicated on the 16th July 1863, for Church of England Church, School and Parsonage. These Allotments have for the past 70 years been used as burial ground for all denominations excepting Roman Catholic.

In view, however, of certain representations made to my Department, the Church of England Authorities have been asked as to whether that would concur in the dedication referred to being revoked and the area being reserved as a General Cemetery and placed under the control of an appropriate trust.

The matter will be further considered on receipt of reply from the Church of England Authorities.

Yours faithfully,

J.M. Tully”⁴³

It is worth noting in the letter above that the Minister mentions that the cemetery has "for the past 70 years been used as burial ground for all denominations", this corresponds approximately to the period that the Church of England Church moved to its new location on Lot 4 and 5 of Section 2 nearer the centre of town in 1871. The local community in the 1870's may have thought that with the departure of the Church of England Church from the site, its authority over the area had ceased, this may have seen the introduction of all denomination burials without realising it was still dedicated Church of England land. I should mention here that up until at least when the photographs of the C of E bark Church in the Holtermann Collection were taken the perimeter fence of the Church and graveyard was still in its original position as per the town maps drawn by the surveyors in 1859.

⁴³ Hill End and Tambaroora Gathering Group

CEMETERIES OF THE TAMBAROORA

Saturday, 11 April 2026

© Warwick P Taylor 2026 – tambaroora.com

A letter to Harry Walpole from the Minister of Conservation Mr. Dunn dated the 5th April 1945 gave an update on progress being made to the recognition of the cemetery:

“5th April 1945

Dear Harry,

On my return to Sydney from my Electorate where I spent in all 12 days, I looked up the case in regard to the Hill End Cemetery.

I found that I had made strong representations to my colleague Mr. J.M. Tully, Minister of Lands, and that I had received a reply from him under date of 14th February setting out the position. This letter I sent to you on the 15th February.

It was stated in the letter from the Minister of Lands that in view of certain representations made to his Department, the Church of England authorities have been asked as to whether they would concur in the dedication referred to being revoked and the area being reserved as a general cemetery and placed under the control of an appropriate Trust.

An officer in the Lands Department informed me that the matter is held up until a final reply is received from the Church of England authorities.

As far as I can find out, the Church of England authorities have almost freehold title over the area in question and until such time as they agree to the revocation of the reserve the Lands Department is not able to deal with it.

I shall keep in touch with the Lands Department and immediately I have some further information, I shall write to you again.

With kind regards,

Your sincerely,

Dunn”⁴³

Mr. T. Allsop was tasked with ascertaining if Lots 4 and 5 adjoining Lot 3 the Parsonage Lot would be suitable for burial purposes. He wrote to Harry Walpole on the 24 May 1945:

“24/5/45

Dear Harry,

In connection with the proposed general cemetery at Tambaroora, I have been asked to report from local knowledge is possible as to the suitability of Lots 4 and 5 Sec.16, for burial purposes. The allotments adjoin the C. of E. Parsonage site, and are shown on sketch below (

Figure 44). I do not remember whether they are suitable for graves, but thought that you would know and let me have your opinion.

If you consider that the lots are suitable for burial purposes I can report accordingly, but if you say that they are not suitable the matter will have to wait until such time as I can get out that way.

The allotments have been suggested as an alternative to resumption and dedication of the existing burial area as a General Cemetery.

My regards to Mrs Walpole,

Sincerely,

T. Allsop”⁴³

CEMETERIES OF THE TAMBAROORA

Saturday, 11 April 2026

© Warwick P Taylor 2026 - tambaroora.com

Figure 44 - C of E Cemetery - Sketch of Section 16 showing Lots 4 and 5

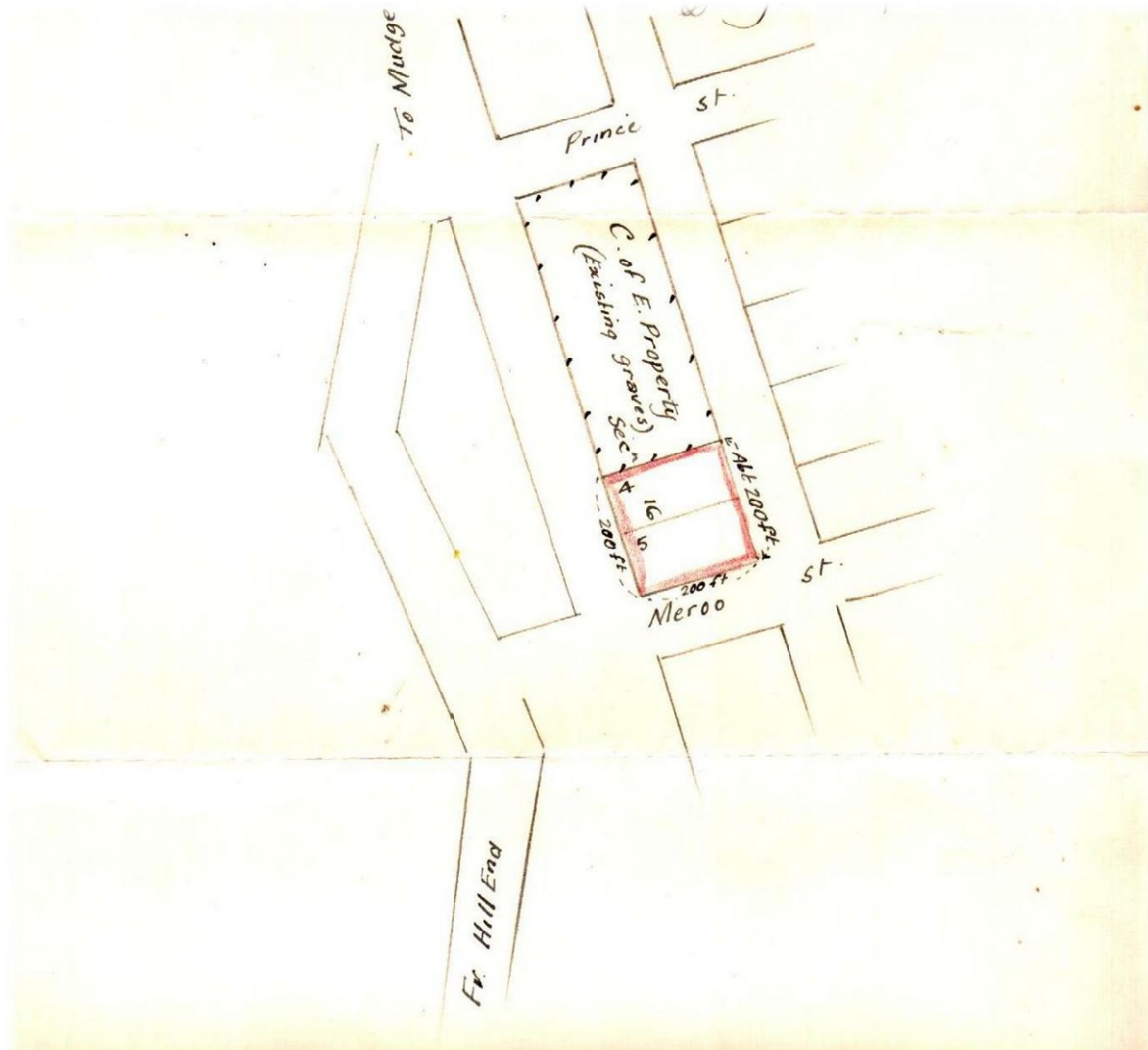


Image Courtesy of the Hill End and Tambaroora Gathering Group

Further correspondence between the Minister of Lands Mr. J.M. Tully and the Minister of Conservation Mr. W. Dunn dated the 14th September 1945 gave a progressive update:

“14th September 1945
The Hon. W.F. Dunn, M.L.A.,
Minister of Conservation,
SYDNEY.

Dear Mr. Dunn,

With reference to your further personal representations on behalf of Mr. Harry Walpole of Hill End, concerning the burial ground in that locality, I have to inform you that this matter is at present with the District Surveyor, who has been asked to expedite his report as far as practicable.

Your faithfully,
Minister of Lands.”⁴³

Twelve months later Harry Walpole received a letter from the Minister of Lands Mr. W. Dunn, with another progressive report:

“5 Sep 1946
H. Walpole, Esq.,
HILL END. N.S.W.

Dear Mr. Walpole,

With reference to your recent personal representations to me at Hill End relative to the Hill End and Tambaroora Cemetery, I desire to inform you that upon my return to Sydney I have looked into the matter.

The position at the moment is a little complicated, but negotiations are being carried out with the Church of England Authorities and I hope to have the matter finalised shortly.

The area which is now being used as a cemetery for the Hill End ad Tambaroora locality is actually the property of the Church of England Authorities and, as you know, it has been used for many years as a burial ground for the dead of all denominations except Roman Catholic. Everything was apparently satisfactory until the Church of England Authorities decided that any burials within the area must be conducted in accordance with the service of the Church of England. No plan of burials has been carried out and consequently graves of all denominations are intermingled throughout the area.

The surface parts of the land is shallow and other parts are affected by erosion, but the District Surveyor considered that there is sufficient area, mostly in the north east corner, to meet the requirements for the next 50 years. It was suggested by the District Surveyor that the whole area be resumed by the Crown and after reservation as a General Cemetery, an allotment be made for the exclusive use of the Church of England Authorities and the balance allotted for general use by any other denomination which may require the use of same.

In view of the fact that the area is the property of the Church of England Authorities, this suggestion has been referred to those Authorities for any comment and upon receipt of a reply the matter will be further considered. It has also been suggested that if Ministers of other denominations were permitted to conduct burial services within the area, the present difficulty might be eased.

Your faithfully, M. Dunn”

Harry Walpole’s relentless pursuit to have the cemeteries status changed finally paid dividends when he received a letter from the Lands Department in October 1946:

“24th October 1946
H. Walpole Esq.,
HILL END N.S.W.
Dear Sir,

With reference to previous correspondence and more particularly to the Minister's letter to you of the 3rd September, 1946, relative to the Hill End and Tambaroora Cemetery, I desire to inform you that the authorities of the Church of England are prepared to have the Allotments 1, 2 and 3 resumed by the Crown subject to provision being made therein for a suitable site for the exclusive use of the Church of England Denomination, the balance of the area to be set apart for general use by any Denomination which may require to use same.

In the circumstances the Minister has approved of the District Surveyor at Orange being authorised to survey an area in the north east corner of Allotment 1 which would meet the requirements of the Church of England authorities, with a view to the dedication and grants dedicated for a general

cemetery, the area surveyed to be allotted as a Church of England burial ground and the remainder to be left as a general burial ground for all other Denominations.

Yours faithfully,
H.H. Gust,
Under Secretary⁴³

In 1947 a survey was undertaken of the cemetery to “measure for Church of England Burial Ground”, this entailed sub-dividing Lot 1 into two equal Lots, Lot 1 and Lot 6, Lot 6 was to be the C of E burial ground⁴⁴.

Approval Given to Revoke Dedicated C of E Lands and Change to General Cemetery - 1950

It still took until 1950 that positive steps were made to officially recognise the cemetery. In that year a proposal for the resumption of the dedication of Lots 1, 2 and 3 Section 16 made in 1863 and the re-dedication as a general cemetery was made in the NSW Government Gazette⁴⁵ (Figure 45).

Figure 45 - C of E Cemetery - NSWGG Proposal to Resume the Dedicated Lands

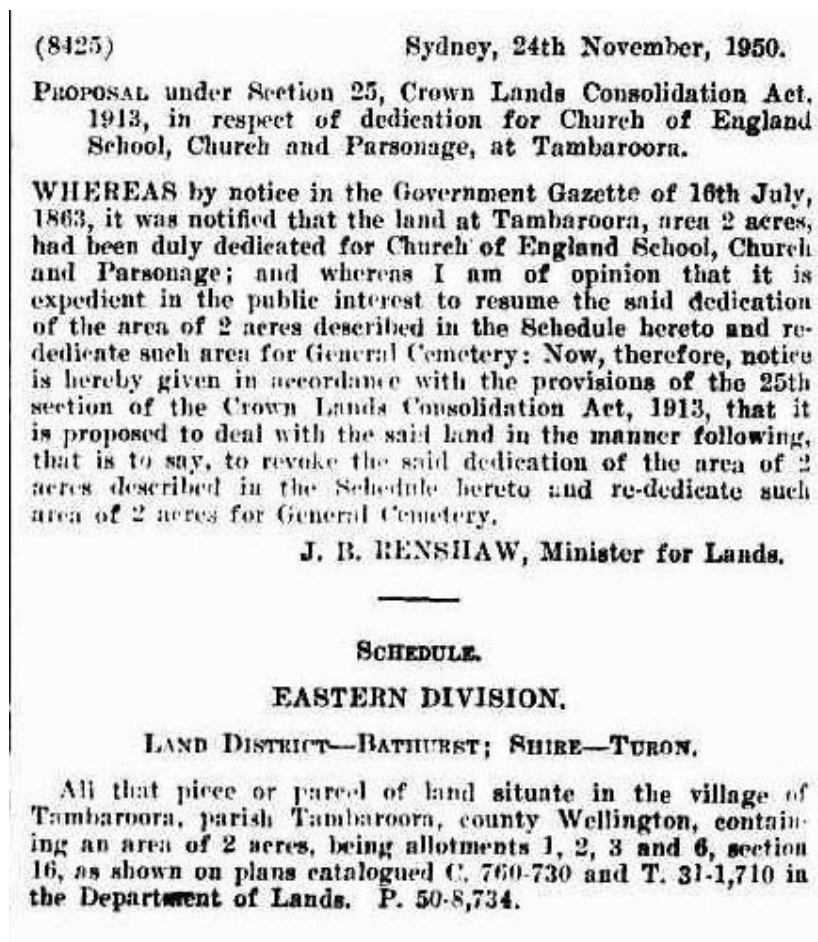


Image Courtesy of TROVE, National Library of Australia

⁴⁴ Crown Survey Plan, Lot 6 Section 16, 31-1710, 1947, NSW Land Registry Services

⁴⁵ New South Wales Government Gazette, No.180, p.3504, dtd 24 Nov 1950

Revocation of the Church of England Lands and Re-Dedication of the Tambaroora General Cemetery

On the 22 Jun 1951 the NSW Government Gazette⁴⁶ (Figure 46) revoked the 1863 C of E land dedication and the land was re-dedicated as a general cemetery.

Figure 46 - Revocation and Re-Dedication of the C of E Land as the Tambaroora General Cemetery

(2981)	Sydney, 22nd June, 1951.
REVOCATION OF DEDICATION, ETC.	
<p>WHEREAS under section 25 of the Crown Lands Consolidation Act, 1913, power is given for the revocation of any dedication of Crown land dedicated and granted by the Crown, and for the making of any new dedication thereof: Now, therefore, I do hereby declare that all preliminary action has been taken in connection with the revocation of the dedication and grant</p>	
<p>for Church of England School, Church and Parsonage at Tambaroora, area 2 acres, dedicated 16th July, 1863, and the re-dedication of such area of 2 acres for General Cemetery, and I do hereby revoke the said dedication and grant of the area of 2 acres described in the Schedule hereto and re-dedicate such area of 2 acres for General Cemetery.</p> <p style="text-align: center;">J. B. RENSHAW, Minister for Lands.</p> <p style="text-align: center;">SCHEDULE.</p> <p style="text-align: center;">EASTERN DIVISION.</p> <p style="text-align: center;">LAND DISTRICT—BATHURST; SHIRE—TURON.</p> <p>All that piece or parcel of land situate in the village of Tambaroora, parish Tambaroora, county Wellington, containing an area of 2 acres, being allotments 1, 2, 3 and 6, section 16, as shown on plans catalogued C. 760-730 and T. 31-1,710 in the Department of Lands. P. 50-8,734.</p>	

Image courtesy of TROVE, National Library of Australia

This final dedication saw an end to a long battle to have not only the cemetery recognised officially but also noted that it was in fact originally the site of the C of E church, school and parsonage, and never gazetted or dedicated as a formal cemetery. Its existence as a cemetery was more akin to being the C of E graveyard only.

⁴⁶ New South Wales Government Gazette, No.102, p.1844, dtd 22 Jun 1951

Trustees Appointed for the Church of England Burial Ground within the General Cemetery ⁴⁷

Trustees were appointed on the 14 Feb 1952 for Lot 6, the C of E burial ground within the general cemetery (Figure 47)

Figure 47 - C of E Cemetery - Trustees Appointed for the Church of England Burial Ground

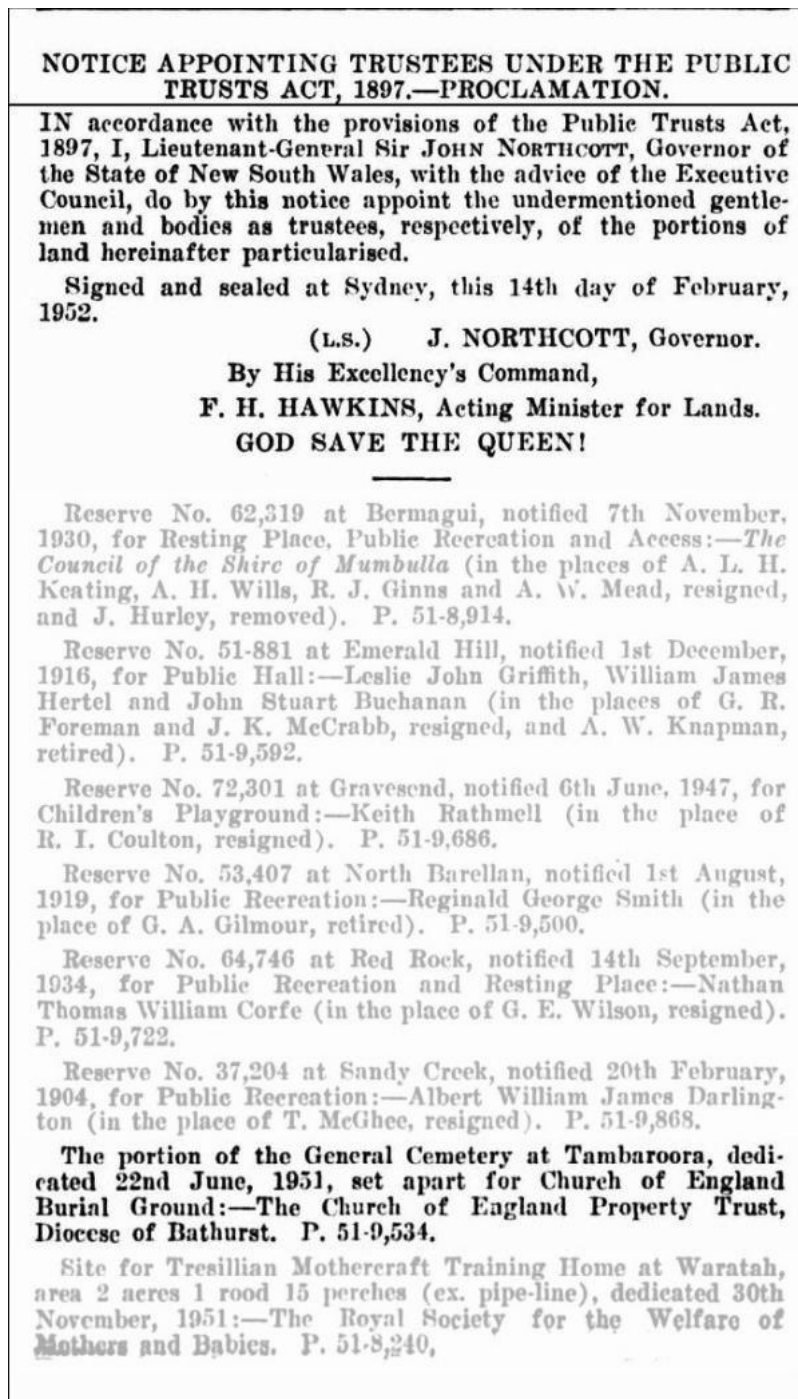


Image Courtesy of TROVE, National Library of Australia

Trustees Appointed for the Tambaroora General Cemetery Exclusive of the Church of England Portion

1959 saw the appointment of Trustees for the Tambaroora general cemetery excluding the portion set aside as the C of E burial ground (Figure 48).

Figure 48 - C of E Cemetery - Trustees Appointed for the Tambaroora General Cemetery

(1905)

Sydney, 21st August, 1959.

IT is hereby notified that, in accordance with the provisions of section 26 of the Crown Lands Consolidation Act, 1913, the undermentioned ladies and gentlemen are hereby appointed as trustees, respectively, of the portions of land hereunder particularised.

J. M. A. McMAHON, Minister for Lands.

The portion of the General Cemetery at Barraba, parish of Barraba, county of Darling, dedicated 22nd November, 1870, set apart for Presbyterian Burial Grounds:—Robert George Hannaford (in the place of L. T. Murray, deceased). Pks. 56-3,411.

The portion of the General Cemetery at Clifton (Wombarra), parish of Southend, county of Cumberland, dedicated 24th September, 1889, set apart for Burial Grounds for Other Denominations:—Ronald McCombie, James McGarrity, Robert G. Brown, William A. Millen and Harold Thomas (in the places of J. McGrath, W. L. Jones and A. T. Wilson, retired, R. J. Pulley, deceased, and F. H. Baker, resigned). Pks. 53-3,740.

The portion of the General Cemetery at Henty, parish of Edgehill, county of Mitchell, dedicated 22nd November, 1902, set apart for Presbyterian Burial Grounds:—Arthur Ashley Campbell (in the place of J. Macreadie, retired). Pks. 54-9,151.

The portion of the General Cemetery at Marrar, parish of Kunilabah, county of Bourke, dedicated 2nd August, 1902, set apart for Burial Grounds for Other Denominations:—Eric McLennan Miller (in the place of K. Palmer, deceased). Pks. 52-1,117.

An area of 50 acres, an area of 3 acres 1 rood and an area of 17 acres 16 perches, dedicated 15th August, 1879, 28th July, 1900, and 25th October, 1893, respectively, for Public Recreation at Panbula, parish of Panbula, county of Auckland:—Edward Ernest Wood (in the place of J. B. Wilkins, deceased). Pks. 59-670.

An area of 74 acres at Pilliga, parish of Talluba, county of Baradine, dedicated 17th January, 1894, for Public Recreation and known as "Pilliga Park":—Raymond David Allen (in the place of V. W. Ferguson, resigned). Pks. 57-706.

The General Cemetery at Tambaroora (exclusive of the Church of England portion), parish of Tambaroora, county of Wellington, dedicated 22nd June, 1951:—Evelyn L. Woolard, Florence A. Ellis, John William Stuart, Lindsay Patrick Kimm, Herbert Woolard, Walter Alexander Hamilton and Cecil Drakeford. Pks. 53-4,042.

Image Courtesy of TROVE, National Library of Australia

Survey Undertaken in 1997

A survey was undertaken by Mudgee Shire Council, now known as Mid-Western Regional Council (MWRC), in 1997 of the cemetery, a plan was drawn showing all known grave sites and the cemetery portioned into sections with an area dedicated to the Catholic church. At the time Mudgee Shire had control of the Cemetery as it fell within their Local Government area (LGA).

No other information or supporting documentation has been found relating to the 1997 survey or plan.

Contact with MWRC in September 2024 advised that they cannot find any supporting documentation other than the plan in relation to the survey undertaken. It is possible that any documentation may have been passed onto Evans Shire Council when it became part of their LGA, and again later when Bathurst Regional Council took over control.

Update

29 Aug 2024 Tambaroora General Cemetery - 1951 (formerly the C of E Cemetery 1854)

Lot 6 Section 16 - A search at the NSW State Records for surveyor Stevenson's notes for the survey of the future Lot 6 Section 16 undertaken in 1947 has found his notes of the survey but they have not revealed any mention of possible graves within the surveyed area.

The survey was done in preparation of handing control of the Lot to the C of E Property Trust for the C of E Burial Ground within the General Cemetery.

(The End - FOR NOW!)

Submission on Rural Cemetery Reform

Tambaroora General Cemetery

To: Bathurst Regional Council

From: Warwick P Taylor

18 Thompsons Lane, Hill End, NSW 2850

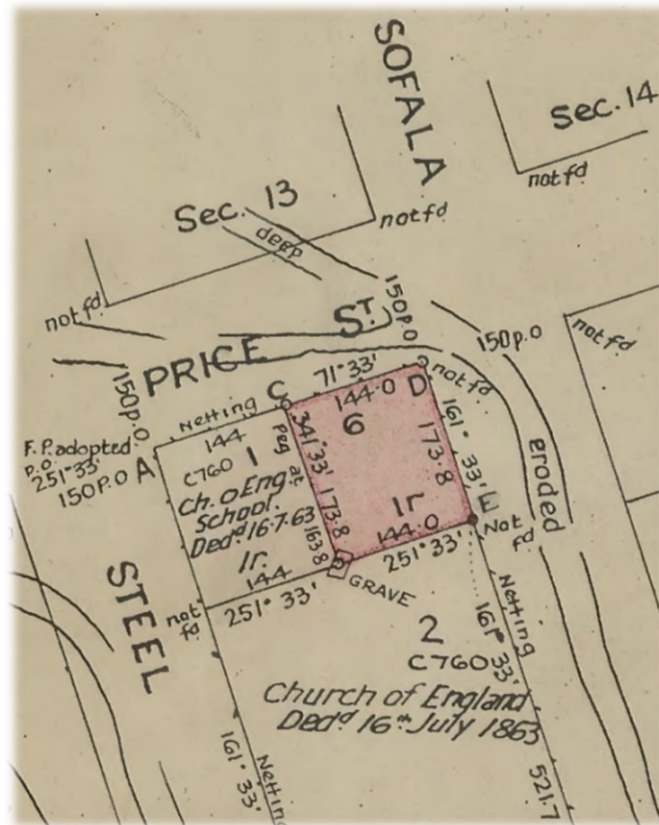
Preamble

This submission is being presented with the intention to detail two sites within the current Tambaroora General Cemetery (TGC) which are devoid of interments.

The submission is made using only documentary evidence that has been taken from reputable sources, it is absent of hearsay, opinion or emotion. Any mention of documentary evidence or images in this document are in my possession and can be provided if requested.

Background information has been included in Site One to allow an understanding of the TGC's history when it was the Church of England Church cemetery and the issues associated with its management.

Site One - Lot 6 Section 16 within the current TGC



Background

Research into the history of the Church of England land dedicated for the school, church, and parsonage in 1863 eventually led to the realization that the cemetery was not a part of this dedication as such. It simply followed that cemeteries were an integral part of churches and churchyards, an accepted practice passed on from our English heritage.

In 1929 a corporate trust from Bathurst undertook to rejuvenate the cemetery, it was not until after this activity that it was realised that the Trust had inadvertently cleaned the wrong cemetery, they had cleaned the TGC⁴⁸ in the western part of Tambaroora which had been surveyed⁴⁹ and dedicated⁵⁰ in 1898. When this error had been realised representations were made to religious and political authorities over the cemetery's management and non-denominational burials. One of which saw a delegation from Tambaroora and Hill End approach the Bishop of Bathurst regarding the ongoing management of the cemetery, it was at this meeting that it was found that the cemetery was not in fact a dedicated cemetery of any denomination, having never being gazetted for that purpose.

In 1944 at the instigation of Mr. Harry Walpole of Hill End an exchange of correspondence between Members of State Parliament sought to put an end to the ongoing issue of control of the cemetery being used by the residents of both Tambaroora and Hill End.

A letter from the Minister of Lands Mr. J.M. Tully to the Minister of Conservation the Hon. W.F. Dunn M.L.A. in January 1945 made inquiries as to having the Church of England dedication that was notified in 1863 revoked and re-dedicated and proclaimed a general cemetery and placed under the control of Trustees.

Approaches were made by the Minister of Lands Mr. J.M. Tully in Feb 1945 to the Church of England authorities to see if they would agree to the revocation of the dedication made.

Further correspondence between the Minister of Lands Mr. J.M. Tully and the Minister of Conservation Mr. W. Dunn dated the 14th September 1945 gave a progressive update:

“Dear Mr. Dunn,

With reference to your further personal representations on behalf of Mr. Harry Walpole of Hill End, concerning the burial ground in that locality, I have to inform you that this matter is at present with the District Surveyor, who has been asked to expedite his report as far as practicable.

*Your faithfully,
Minister of Lands”*

⁴⁸ TGC, Lot 7319 as the Plantation and Lot 7320 as the Cemetery, DP1159083

⁴⁹ Crown Survey Plan, 386-3090, Tambaroora General Cemetery

⁵⁰ NSW Government Gazette, No.879, Pg.8051, dtd 8 Oct 1898

Walpole received an update from the Minister of Lands Mr. W.Dunn on the 5 September 1946:

Please note the comment made below “in red” by the District Surveyor as I consider the comment crucial in determining the status of the ground for usage as part of the cemetery.

“Dear Mr. Walpole,

With reference to your recent personal representations to me at Hill End relative to the Hill End and Tambaroora Cemetery, I desire to inform you that upon my return to Sydney I have looked into the matter. The position at the moment is a little complicated, but negotiations are being carried out with the Church of England authorities and I hope to have the matter finalised shortly. The area which is now being used as a cemetery for the Hill End and Tambaroora locality is actually the property of the Church of England Authorities and, as you know, it has been used for many years as a burial ground for the dead of all denominations except Roman Catholic. Everything was apparently satisfactory until the Church of England Authorities decided that any burials within the area must be conducted in accordance with the service of the Church of England. No plan of burials has been carried out and consequently graves of all denominations are intermingled throughout the area. *The surface parts of the land is shallow and other parts are affected by erosion, but the District Surveyor considered that there is sufficient area, mostly in the north east corner, to meet the requirements for the next 50 years. It was suggested by the District Surveyor that the whole area be resumed by the Crown and after reservation as a General Cemetery, an allotment be made for the exclusive use of the Church of England Authorities and the balance allotted for general use by any other denomination which may require the use of same. In view of the fact that the area is the property of the Church of England Authorities, this suggestion has been referred to those Authorities for any comment and upon receipt of a reply the matter will be further considered. It has also been suggested that if Ministers of other denominations were permitted to conduct burial services within the area, the present difficulty might be eased.*

Your faithfully,

M. Dunn”

The area described by the District Surveyor has remained empty until recently when the first interment appeared in 2007, there being only 5 interments since then in the allotted area. Interments continued in the TGC but within the rows as seen in the potential other Site Two.

Walpole received a further update on the 24 October 1946 from the Lands Department:

“24th October 1946

H. Walpole Esq.,

HILL END N.S.W.

Dear Sir,

With reference to previous correspondence and more particularly to the Minister's letter to you of the 3rd September, 1946, relative to the Hill End and Tambaroora Cemetery, I desire to inform you that the authorities of the Church of England are prepared to have the Allotments 1, 2 and 3 resumed by the Crown subject to provision being made therein for a suitable site for the exclusive use of the Church of England Denomination, the balance of the area to be set apart for general use by any Denomination which may require to use same. In the circumstances the Minister has approved of the District Surveyor at Orange being authorised to survey an area in the north east corner of Allotment 1 which would meet the requirements of the Church of England authorities, with a view to the dedication and grants dedicated for a general cemetery, the area surveyed to be allotted as a Church of England burial ground and the remainder to be left as a general burial ground for all other Denominations.

Yours faithfully,

I. H. Gust,

Under Secretary”

In 1947 a survey was undertaken of the cemetery to “measure for Church of England Burial Ground”, this entailed sub-dividing Lot 1 into two equal Lots, Lot 1 and Lot 6, Lot 6 was to be the C of E burial ground.

Surveyor Stevenson undertook the task on the 5 November 1947, the resulting survey created the Lot 6 Crown Plan⁵¹.

Stevenson's survey notes which are now in the NSW State Records does NOT make any mention of graves in his computation sheet and only a single grave outside the south west corner of the Lot is shown on his plan, it would have been the surveyors obligation to record and disclose any existing graves seen within the future Lot 6 considering the purpose of the survey.

1951 saw the dedication of the Church of England Lots 1, 2, 3 and 6 revoked and re-dedicated as the TGC⁵². With this revocation the land became vested in Crown Lands. A title search of Lot 6 Section 16 shows that Schedule One is vested in “The State of New South Wales”⁵³.

The Church of England Property Trust, Diocese of Bathurst were appointed Trustees on the 14 February 1952 for the Church of England Burial Ground being Lot 6 as part of the TGC ⁵⁴

*Trustees were appointed for the TGC **exclusive** of the Church of England portion on the 21 August 1959⁵⁵*

⁵¹ Crown Survey Plan, T.31-1710, Lot 6 Section 16

⁵² NSW Government Gazette, No.102, Pg.1844, Folio 2981, dated 22 June 1951,

⁵³ Title Search, Lot 6 Section 16, Folio 6/16/758950

⁵⁴ NSW Government Gazette, No.36, Pg.511, dtd 15 Feb 1952

⁵⁵ NSW Government Gazette, No.94, Pg.2550, Folio 1905, dated 21 August 1959,

A survey was undertaken in 1997 of the cemetery by Mudgee Shire Council, a plan drawn⁵⁶ from this survey shows all known grave sites and the cemetery portioned into sections with an area dedicated to the Catholic church⁵⁷. At the time Mudgee Shire had control of the cemetery as it fell within their Local Government Area(LGA). No other information or supporting documentation has been found relating to the 1997 survey or plan.

Contact with Mid-Western Regional Council, formerly Mudgee Shire Council (MSC) in September 2024 advised that they cannot find any supporting documentation other than the plan in relation to the survey undertaken. It is possible that any associated documentation may have been passed onto Evans Shire Council when it became part of their LGA, and again later when Bathurst Regional Council took over control.

Individuals who took it upon themselves to manage the TGC in the 1990-2000 and later and who had no knowledge of the legal position of the TGC land holdings may have presented MSC with wrong information. The area marked as “*unused Roman Catholic*” on the plan is in fact the Church of England Lot 6 burial ground portion.

Conclusion - Site One

The land selected in 1947 for the future Lot 6 must have been identified as being void of any graves to warrant it being selected and surveyed, the decision to survey the area would have been made based on either documentary evidence, visual inspection or accurate local knowledge or all of the above.

Harry Walpole was born in 1905 and grew up in Hill End and was passionate about his surroundings, he was an active member of the community and was involved in many aspects of its management. Walpole would have had contact with those involved with the survey in November 1947 and may have been instrumental in pointing out the area that he knew to be vacant cemetery ground.

With the Title of Lot 6 Section 16 being vested in the State of New South Wales⁵⁸ there is no requirement to change ownership of the Lot, the Church of England Property Trust in the Diocese of Bathurst only ever being appointed as Trustee’s and not owners.

The plan created in 1997 by MSC noted that the north east corner was “unused Roman Catholic”, even though the wrong denomination was noted, it being in fact the Church of England Lot 6 portion, it was annotated as being “*unused*”, this determination must have been made either by visual inspection or from information passed onto the MSC surveyor from an unknown source.

⁵⁶ Plan of TGC, by Mudgee Shire Council, Surveyor Neil Sullivan, 1997, copy still held by Mid-Western Regional Council

⁵⁷ Why the plan included an area for a Catholic portion is unknown as the Tambaroora Catholic Cemetery was still functioning at the time.

⁵⁸ Title Search, Lot 6 Section 16, Folio 6/16/758950

While undertaking research into the TGC I created an aerial image of the cemetery in which I annotated known graves with the year of interment, from this I was able to identify the progressive spread of interments within the TGC⁵⁹.

Initially the spread of graves was contained within the original fence line of the Church of England churchyard, it was not until 1872-73 when the church was removed that saw the expansion of the cemetery outside the original fence line and occupying the current fence line as we see it today.

Graves started to appear in the western side of Lot 1 up until the late 1870's, after this graves in the 1880's started to appear along the eastern boundary in Lot 2, the north east corner of Lot 1 remained void of any graves, the move from the north west of Lot 1 to the eastern side of Lot 2 on Sofala Street was the start of the progressive chronological order of grave rows flowing to the west towards Steele Street as can be seen in the image in [Site 2](#).

Site Two

The area within the yellow outline on the western boundary of the TGC is undisturbed ground indicating it has not had any interments to date. As can be seen in the image below the grave rows have progressed chronologically over the years from right to left. There are of course grave interment dates which are out of order but only because of either reservations made or interment with a family member or members who have passed away earlier. The area within the yellow outline would accommodate at least 30 future interments using an area of 5 sq mts per grave which includes row spacing and spacing between graves.



⁵⁹ Web Site, tambaroora.com



View looking south over the unused ground

Summary

*Both sites offer the opportunity to use space within the TGC which has **NOT** had any previous interments.*

*In regard to **Site One**, the fact that the District Surveyor in 1947 stated Lot 6 offered future usage for the next 50 years and the fact that there have not been any interments within the Lot other than the recent five interments post 2007 would see the life expectancy extended for another fifty years.*

A walk around Lot 6 looking at the ground texture does not show any disturbance, disfiguration or upheaval and is absent of any remnants of grave surrounds or grave goods in comparison to the rest of the cemetery.

***Site Two** would allow for the continuance of the grave rows until all space has been expended, which at the low rate of interments would see its existence for many years to come, again a walk around the site does not show any ground disturbance.*

Virtually no changes are required nor expense other than a more professional approach to the management of future interments in lieu of that offered in the past by the local management regime that existed. This is not a reflection on Councils contribution to the management of the TGC but to the lack of knowledge by some locals who innocently made decisions on the placement of some interments. An example being the encroachment into the historic part of the original cemetery due to it not being identified, which I should say now

that an effort should be made to identify the original Church of England grave yard prior to 1873 not only for management and protection purposes but also for tourism.

The maintenance of the TGC in the past has fallen upon those residents and descendants of family members who have shown a keen interest in the history of the TGC and its predecessor, and on the very rare occasion some ground maintenance undertaken by community service persons on weekends which has not happened for some years now, the former I believe would continue to render support without any expense to Council unless the Council saw fit to contribute.

As previously stated and again to avoid any potential confusion it should be noted that there are two TGC in the area, the currently used cemetery and another TGC⁶⁰ that was surveyed in 1897⁶¹ and dedicated in 1898⁶² located to the west of the Tambaroora township, the later is as far as I know still a current cemetery site with no confirmed interments.

I would like to make a final point that at times the name of the TGC has been referred to as the Hill End and Tambaroora Cemetery or the Hill End Cemetery, at no time has it been officially recognised as such, although only a misdemeanor, historical names are being changed due to lack of research which in turn creates a nuisance for those relying on accuracy.

A history of all the cemeteries located within the Tambaroora area can be found at tambaroora.com

For your consideration.

Yours faithfully,

Warwick P Taylor

13 November 2024

⁶⁰ Lot 7319 as the Plantation and Lot 7320 as the Cemetery, DP1159083

⁶¹ Crown Survey Plan, 386-3090, Tambaroora General Cemetery

⁶² NSW Government Gazette, No.879, Pg.8051, dtd 8 Oct 1898

Submission on Rural Cemetery Reform - Addendum

Tambaroora General Cemetery

To: Bathurst Regional Council

From: Warwick P Taylor

18 Thompsons Lane, Hill End, NSW 2850

Preamble

This addendum is added due to a glaring omission by myself, it is being included to supplement the information on Lot 1 and Lot 6 of Section 16, site of the Church of England School and to explain why Lot 6 is empty of any graves.

Background

Both the church and school had been in situ since 1854 when both were opened by the Reverend Mr. Palmer. The school was described as being a “[school room and residence of the school master](#)”⁶³.

The School inclusive of a teachers residence

In 1859 the government surveyor undertook to survey the laying out of the future town of Tambaroora. The surveyor drew on their plan⁶⁴ a small boxed area and notation to indicate the school located on Lot 1, the boxed area although drawn freehand and without any measurements appears to be located centrally within the Lot ([see 1859 plan](#)). This was repeated on the 1860 Town plan⁶⁵ ([see 1860 plan](#)).

There is an absence of town plans up until 1892. The 1860 town plan appears to have taken on the roll of the town charting map until the introduction of the 1892 town plan.

⁶³ Newspaper, Bathurst Free Press and Mining Journal, Pg.2 dtd 8 Jul 1854

⁶⁴ Town Plan - Tambaroora, 1859

⁶⁵ Town Plan - Tambaroora 1860

CEMETERIES OF THE TAMBAROORA

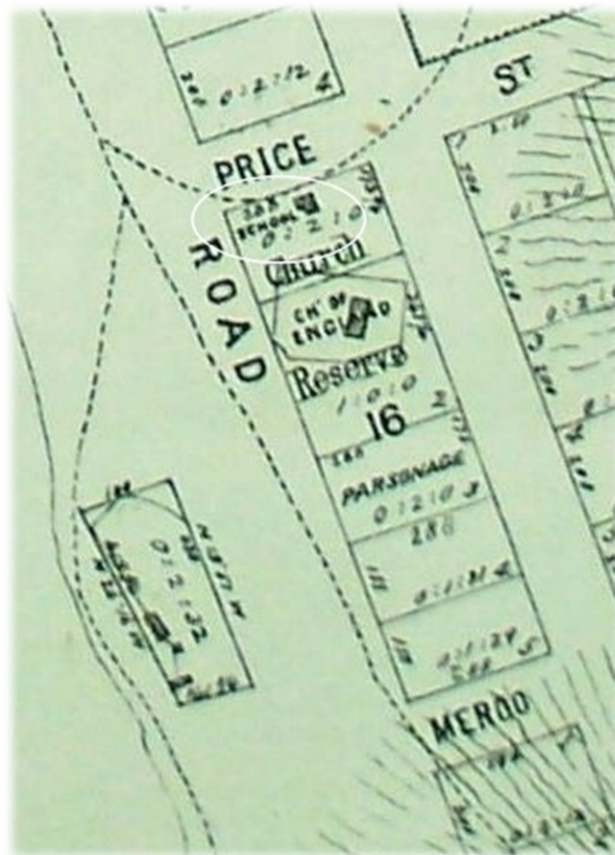
Saturday, 11 April 2026

© Warwick P Taylor 2026 - tambaroora.com

1859 - Town Plan - Section 16 - School Location



1860 - Town Plan - Section 16 - School Location



Summary

The position of the school room and teachers residence may explain why the future Lot 6 remained empty of graves. There must have been an obstruction that prevented interments to continue to be made on Lot 1 moving towards the Lots eastern boundary on Sofala Street in the late 1870's.

That obstruction would have been the school and its surrounds, if the school was certified by the Council of Education funding would have been forthcoming which would have allowed the school to function up until at least 31 December 1882⁶⁶.

It would explain why the chronological order of interments moved from the western side of Lot 1 [[late 1870's interments](#)] to the eastern boundary of Lot 2 and Lot 3 along Sofala Street [[early 1880 interments](#)].

The school and the area used by the school occupying the central part of Lot 1 prevented any further interments in that area.

Very little information can be found relating to the School but it is not alone, the Catholic school and the private schools in Tambaroora have very little recorded history. Absence of evidence is not evidence of absence.

For your consideration.

Yours faithfully,

Warwick P Taylor

19 November 2024

⁶⁶ Funding was withdrawn from Denominational schools on this date with the introduction of the Public Instruction Act of 1880, No.9a, Para.28